

APP CRS	Rwy Idg	5000
173°	TDZE	343
	Apt Elev	355

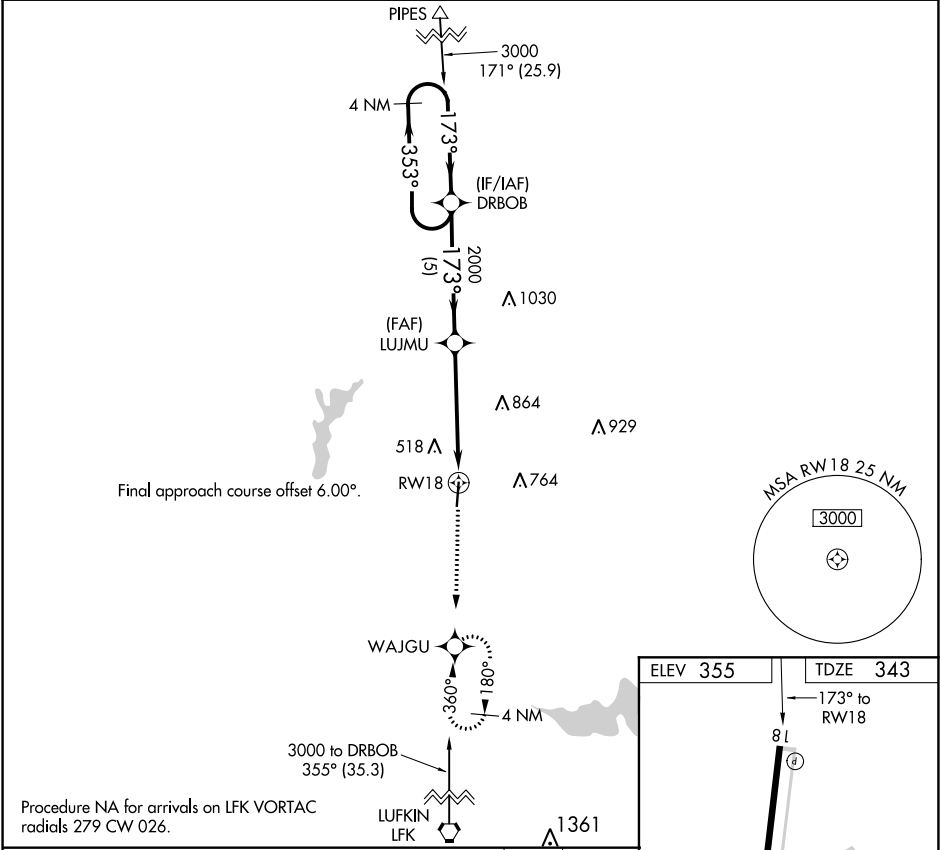
RNAV (GPS) RWY 18

NACOGDOCHES A L MANGHAM JR RGNL (OCH)

DME/DME RNP-0.3 NA. Rwy 18 helicopter visibility reduction below 1 SM NA. When local altimeter not received, use Lufkin altimeter setting and increase all MDA 60 feet and increase LNAV and Circling Cat C visibility to 2 SM.

MISSED APPROACH: Climb to 2400 direct WAJGU and hold.

AWOS-3PT 135,625	HOUSTON CENTER 125.175 285.575	UNICOM 123.0 (CTAF) 0
---------------------	-----------------------------------	--------------------------



4 NM Holding Pattern

DRBOB Visual Segment - Obstacles.

2400 WAJGU

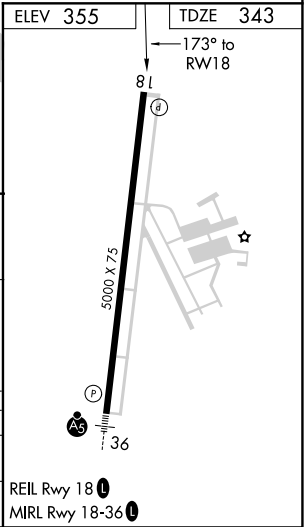
3000 ← 353° 173° → 2000

LUJMU

RW18

5 NM 5 NM

CATEGORY	A	B	C	D
LNAV MDA	980-1 637 (700-1)		980-1¾ 637 (700-1¾)	NA
CIRCLING	980-1 625 (700-1)		980-1¾ 625 (700-1¾)	NA



SC-5, 31 DEC 2020 to 28 JAN 2021

SC-5, 31 DEC 2020 to 28 JAN 2021