

WAAS CH 86719 W01A	APP CRS 012°	Rwy Idg TDZE 237 Apt Elev 245	5000
--	------------------------	---	-------------

RNAV (GPS) RWY 1

CONROE-NORTH HOUSTON RGNL (CXXO)

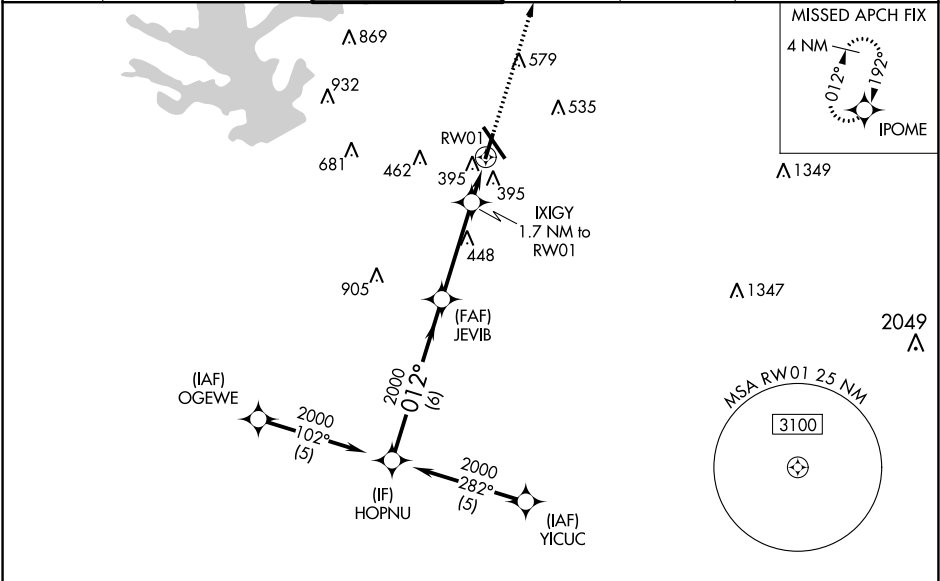
▼

▲

For uncompensated Baro-VNAV systems, LNAV/VNAV NA below -15°C (5°F) or above 48°C (118°F). DME/DME RNP-0.3 NA.
Rwy 1 helicopter visibility reduction below ¾ SM NA.

MISSED APPROACH: Climb to 2000 direct IPOME and hold.

ATIS 118.325	HOUSTON APP CON 119.7 281.4	CONROE TOWER★ 124.125 (CTAF) 0	GND CON 120.45	CLNC DEL 120.45	CLNC DEL 119.55 (When twr closed)
------------------------	---------------------------------------	--	--------------------------	---------------------------	--



ELEV 245 TDZE 237

HOPNU

JEVIB

IXIGY

RW01

2000

2000

2000

2000

GP 3.00°

TCH 49

6 NM

3.6 NM

1.7 NM

012°

012°

*820

1.7 NM to RW01

IPOME

*LNAV only.

CATEGORY	A	B	C	D
LPV DA	521-1 284 (300-1)			
LNAV/VNAV DA	651-1½ 414 (500-1½)			
LNAV MDA	660-1 423 (500-1)		660-1¼ 423 (500-1¼)	
CIRCLING	700-1 455 (500-1)		880-1¾ 960-2¼ 635 (700-1¾) 715 (800-2¼)	

TWR 346

5000 X 100

7201 X 150

012° to RW01

REIL Rwy 32 1
MIRL Rwy 1-19
HIRL Rwy 14-32 1

SC-5, 31 DEC 2020 to 28 JAN 2021

SC-5, 31 DEC 2020 to 28 JAN 2021