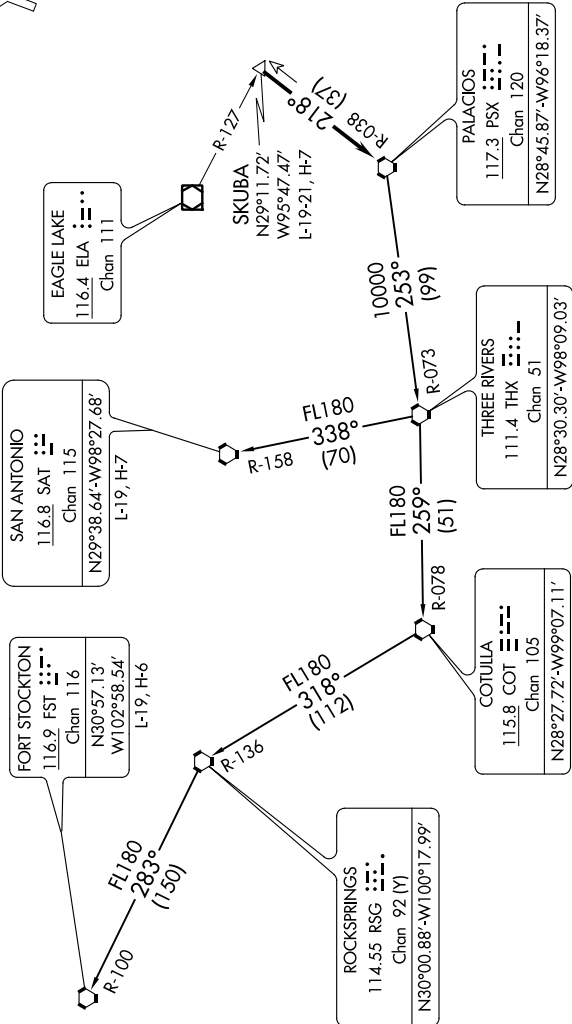


SC-5, 31 DEC 2020 to 28 JAN 2021

TOP ALTITUDE:  
ASSIGNED BY ATC

TAKEOFF MINIMUMS  
Rwys 1, 14, 19, 32: Standard.

ATIS 118.325  
CLNC DEL 120.45  
119.55 (when tower closed)  
GND CON 120.45  
CONROE TOWER\* 124.125 (CTAF)  
HOUSTON DEP CON 119.7 281.4



(NARRATIVE ON FOLLOWING PAGE)

NOTE: RADAR required.  
NOTE: Chart not to scale.

SC-5, 31 DEC 2020 to 28 JAN 2021