

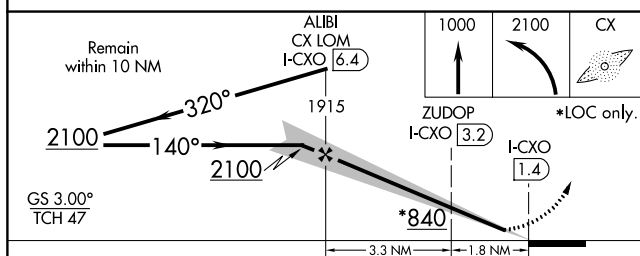
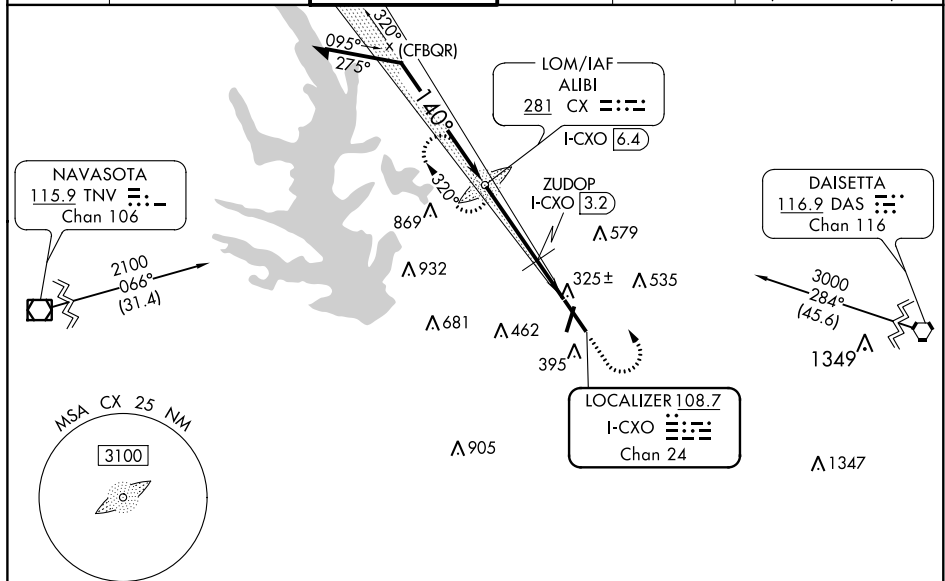
ILS or LOC RWY 14
CONROE-NORTH HOUSTON RGNL (CXO)



TANA

MALSR

MISSED APPROACH: Climb to 1000 then climbing left turn to 2100 direct
ALIBI LOM/I-CXO 6.4 DME and hold.

ATIS 118.325	HOUSTON APP CON 119.7 281.4	CONROE TOWER ★ 124.125 (CTAF) 0	GND CON 120.45	CLNC DEL 120.45	CLNC DEL 119.55 (When twr closed)
------------------------	---------------------------------------	--	--------------------------	---------------------------	--



CATEGORY	A	B	C	D
S-ILS 14	436- $\frac{1}{2}$ 200 (200- $\frac{1}{2}$)			
S-LOC 14	840- $\frac{1}{2}$	604 (600- $\frac{1}{2}$)	840-1 $\frac{3}{8}$	604 (600-1 $\frac{3}{8}$)
 CIRCLING	840-1	595 (600-1)	880-1 $\frac{3}{4}$ 635 (700-1 $\frac{3}{4}$)	960-2 $\frac{1}{4}$ 715 (800-2 $\frac{1}{4}$)
ZUDOP FIX MINIMUMS				
S-LOC 14	640- $\frac{1}{2}$	404 (400- $\frac{1}{2}$)	640- $\frac{3}{4}$	404 (400- $\frac{3}{4}$)
 CIRCLING	700-1	455 (500-1)	880-1 $\frac{3}{4}$ 635 (700-1 $\frac{3}{4}$)	960-2 $\frac{1}{4}$ 715 (800-2 $\frac{1}{4}$)

