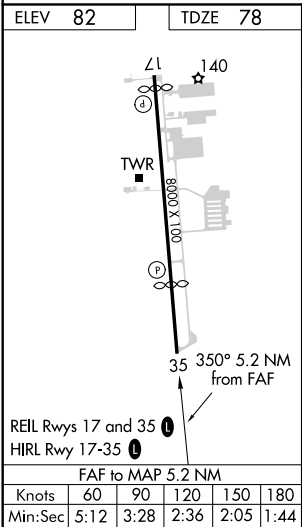
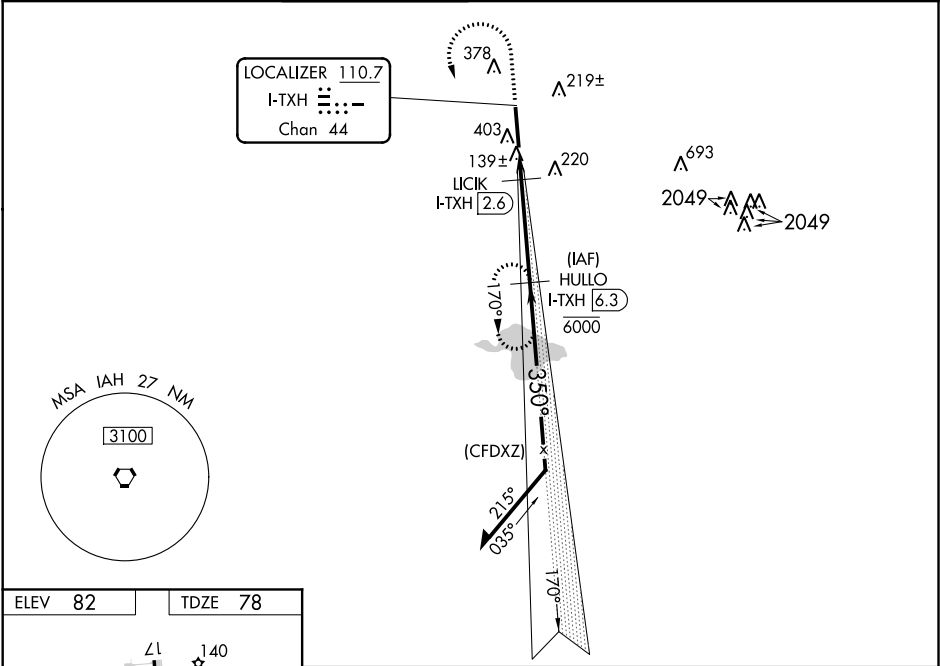


LOC/DME I-TXH <b>110.7</b> Chan <b>44</b>	APP CRS <b>350°</b>	Rwy Idg <b>6016</b> TDZE <b>78</b> Apt Elev <b>82</b>
---	------------------------	---

ILS or LOC RWY 35  
SUGAR LAND RGNL (SGR)

DME required. RADAR required for procedure entry.	MISSED APPROACH: Climb to 900 then climbing left turn to 2000 on I-TXH localizer south course to HULLO/I-TXH 6.3 DME and hold.
VDP NA when using William P Hobby altimeter setting. When local altimeter setting not received, use William P Hobby altimeter setting and increase all DA 51 feet and all MDA 60 feet and S-LOC 35 Cat C/D visibility 1/8 mile, and Circling Cat C/D visibility 1/4 mile.	

ATIS★ <b>118.125</b>	HOUSTON APP CON <b>123.8 257.7</b>	SUGAR LAND TOWER★ <b>118.65</b> (CTAF) <b>0</b>	GND CON <b>121.4</b>	CLNC DEL <b>121.4</b>	CLNC DEL <b>119.25</b> (when twr closed)	UNICOM <b>122.95</b>
-------------------------	---------------------------------------	--	-------------------------	--------------------------	--	-------------------------



<div>900 ↑</div> <div>2000 ↙ I-TXH S crs</div> <div>HULLO I-TXH <span>6.3</span></div>		*600 when using William P Hobby altimeter setting.		
*LOC only.		<div>HULLO I-TXH <span>6.3</span></div> <div>6000 1800</div> <div>Remain within 10 NM</div> <div>170°</div> <div>350°</div> <div>2200</div> <div>GS 3.00° TCH 56</div> <div>1800</div> <div>*540</div> <div>0.9 NM</div> <div>0.7 NM</div> <div>3.7 NM</div>		
CATEGORY	A	B	C	D
S-ILS 35	278-3/4 200 (200-3/4)			
S-LOC 35	400-1 322 (400-1)			
CIRCLING	720-1 638 (700-1)		720-1 3/4 638 (700-1 3/4)	720-2 638 (700-2)

SC-5, 31 DEC 2020 to 28 JAN 2021

SC-5, 31 DEC 2020 to 28 JAN 2021