

WAAS CH 69626 W27A	APP CRS 267°	Rwy Idg 10000 TDZE 87 Apt Elev 96
--	------------------------	--

RNAV (GPS) Z RWY 27

GEORGE BUSH INTERCONTINENTAL/HOUSTON (TAH)

For uncompensated Baro-VNAV systems, LNAV/VNAV authorized with Rwy 26L and Rwy 26R. DME/DME RNP-0.3 NA. For inop ALSF, increase LPV Cat E visibility to RVR 4000, LNAV/VNAV all Cats visibility to 1¼, and LNAV Cat C/D/E visibility to 1¾. LNAV procedure NA during simultaneous operations. Use of FD or AP providing RNAV track guidance required during simultaneous operations.

ALSF-2

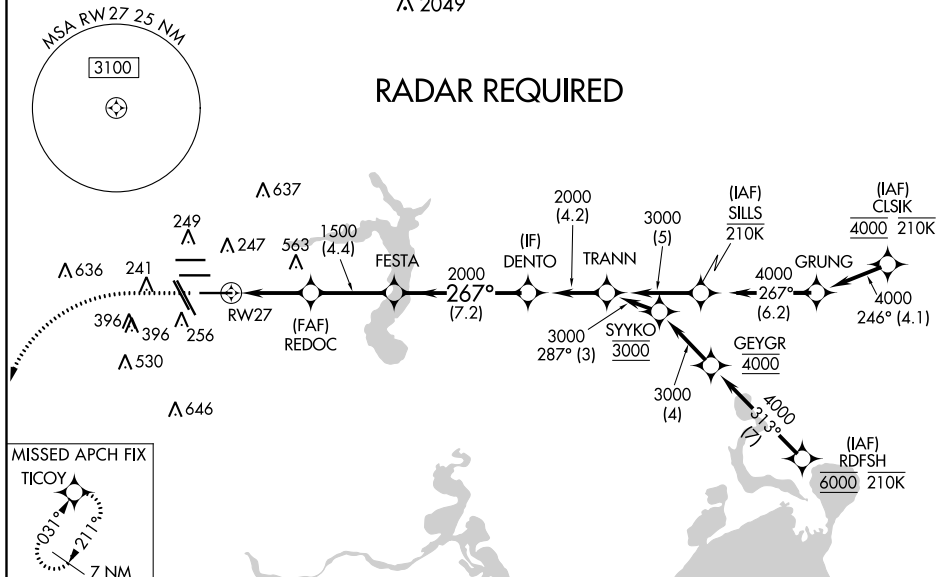


MISSED APPROACH: Climb to 560 then climbing left turn to 3100 direct TICOY and hold.

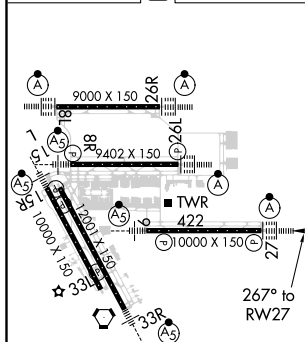
D-ATIS 124.05	HOUSTON APP CON 120.05 379.1 EAST 124.35 316.15 WEST	HOUSTON TOWER 135.15 290.2	GND CON 118.575	CLNC DEL 128.1	CPDLC
-------------------------	--	--------------------------------------	---------------------------	--------------------------	-------

A 2049

RADAR REQUIRED



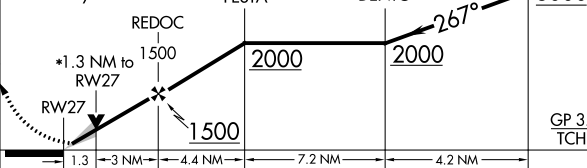
ELEV 96	D	TDZE 87
---------	----------	---------



TDZ/CL Rwy's 8R, 8L, 15R, 26R, 26L,
27 and 33L
HIRL all Rwy's

560	3100	TICOY	VGSI and RNAV glidepath not coincident (VGSI Angle 3.00/TCH 70).
-----	------	-------	--

*LNAV only.



CATEGORY		A	B	C	D	E
LPV	DA	287/18 200 (200-½)				
LNAY/ VNAV	DA	477/45 390 (400-¾)				
LNAY	MDA	560/24 473 (500-½)	560/50 473 (500-1)			