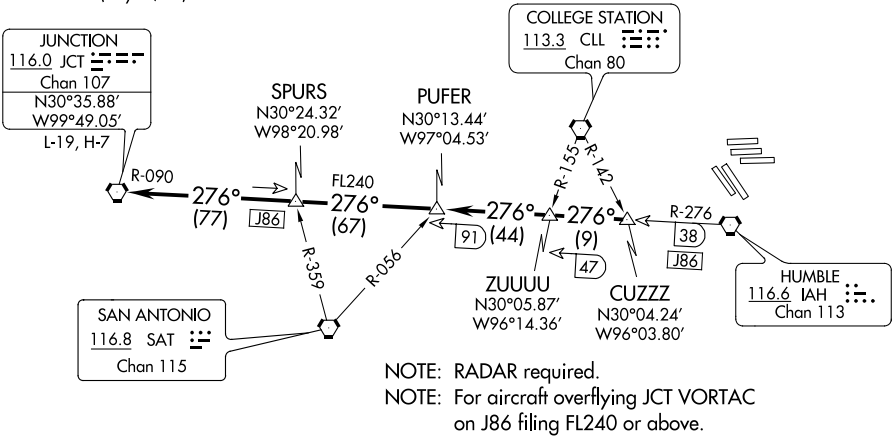


D-ATIS 124.05
CLNC DEL 128.1
CPDLC
HOUSTON DEP CON
126.675 339.8
GND CON
118.575 (Rwys 8L/R, 26L/R, 9/27)
121.7 (Rwys 15L/R, 33L/R)
HOUSTON TOWER
120.725 290.2 (Rwys 8L/26R)
125.35 290.2 (Rwys 8R/26L)
127.3 288.25 (Rwys 15L/R, 33L/R)
135.15 290.2 (Rwys 9/27)

TOP ALTITUDE:
16000



TAKEOFF MINIMUMS
Rwys 8L/R, 9, 15L/R, 26L/R, 27, 33L/R: Standard.

NOTE: Chart not to scale.



DEPARTURE ROUTE DESCRIPTION

TAKEOFF ALL RUNWAYS: Climb on assigned heading for RADAR vectors to CUZZZ INT.
Maintain 16000. Expect filed altitude 10 minutes after departure. Thence . . .

. . . on IAH R-276 and JCT R-090 to JCT VORTAC.

JCT1.JCT) 22JUN17

GEORGE BUSH INTERCONTINENTAL/HOUSTON (IAH)