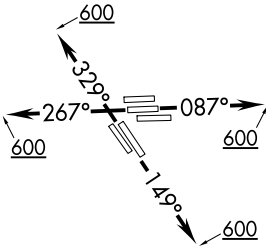
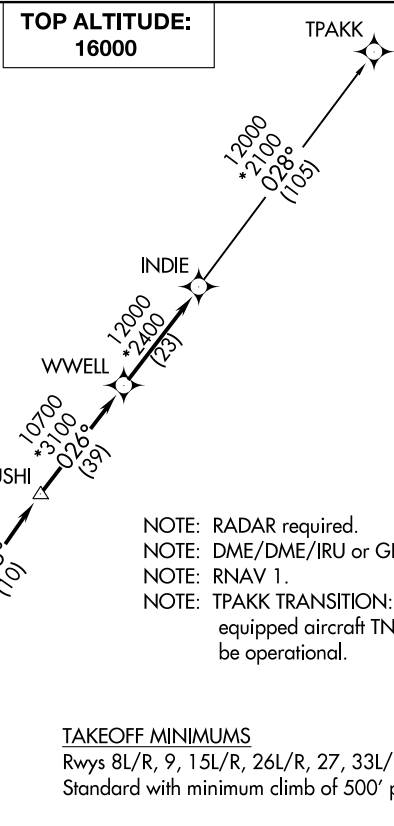


D-ATIS  
124.05  
CLNC DEL  
128.1  
CPDLC  
GND CON  
118.575 (Rwys 8L/R, 26L/R, 9/27)  
121.7 (Rwys 15L/R, 33L/R)  
HOUSTON TOWER  
120.725 290.2 (Rwys 8L/26R)  
125.35 290.2 (Rwys 8R/26L)  
127.3 288.25 (Rwys 15L/R, 33L/R)  
135.15 290.2 (Rwys 9/27)  
HOUSTON DEP CON  
132.25 285.425



**DEPARTURE ROUTE DESCRIPTION**

**TAKEOFF RWYS 8L/R, 9:** Climb heading 087° to 600 for RADAR vectors to RENNK, then . . .

**TAKEOFF RWYS 15L/R:** Climb heading 149° to 600 for RADAR vectors to RENNK, then . . .

**TAKEOFF RWYS 26L/R, 27:** Climb heading 267° to 600 for RADAR vectors to RENNK, then . . .

**TAKEOFF RWYS 33L/R:** Climb heading 329° to 600 for RADAR vectors to RENNK, then . . .

. . . on track 016° to COLET, then on track 025° to SUSHI, then on track 026° to WWELL, then on track 026° to INDIE, then on (transition). Maintain 16000 or as assigned by ATC. Expect filed altitude 10 minutes after departure.

TPAKK TRANSITION (INDIE7.TPAKK)

NOTE: Chart not to scale.

SC-5, 31 DEC 2020 to 28 JAN 2021

SC-5, 31 DEC 2020 to 28 JAN 2021