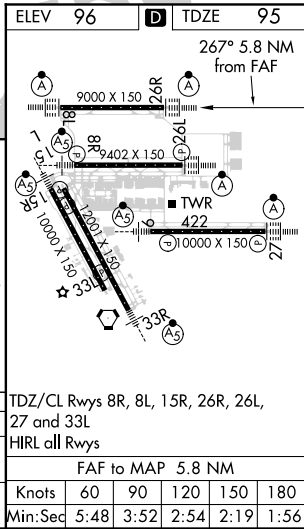
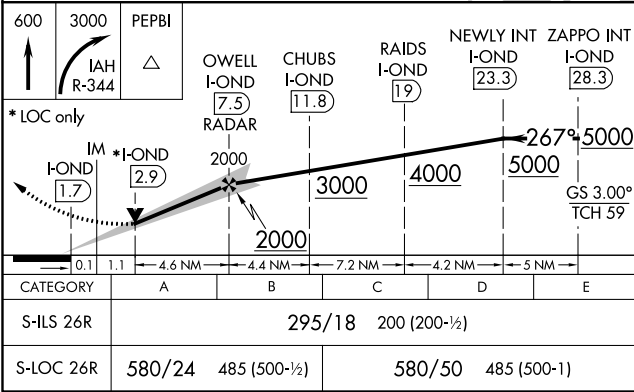
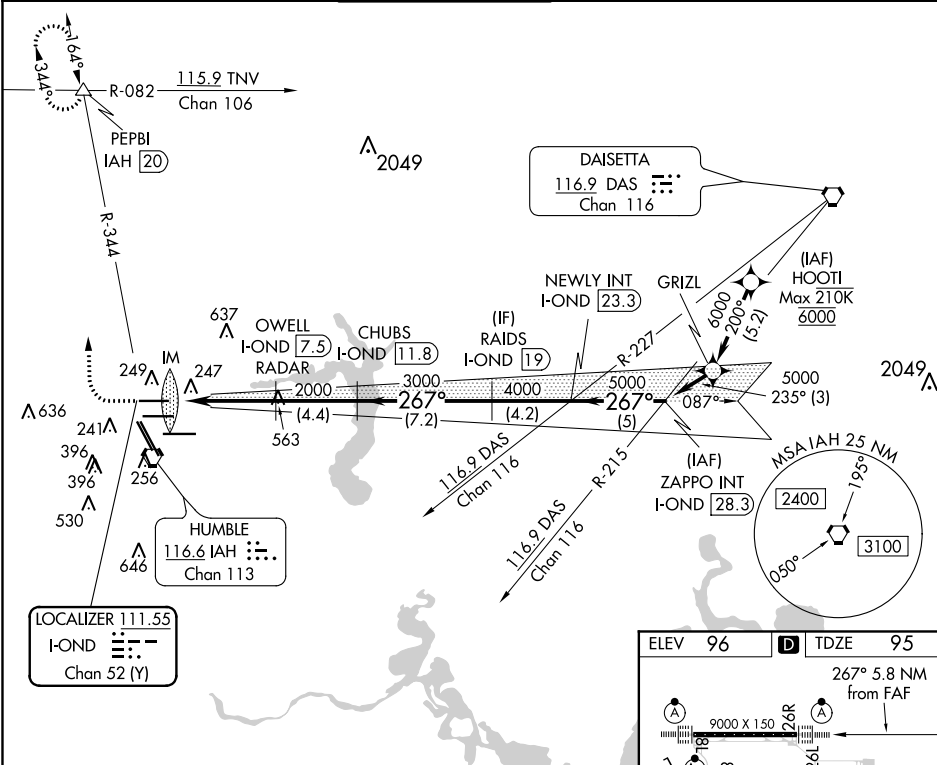


LOC/DME I-OND	APP CRS	Rwy Idg	9000
111.55	267°	TDZE	95
Chan 52 (Y)		Apt Elev	96

ILS or LOC RWY 26R  
GEORGE BUSH INTERCONTINENTAL/HOUSTON (IAH)

DME required. From HOOTI: RNAV 1-GPS required. Simultaneous approach authorized with Rwy 26L and Rwy 27. For inop ALS, increase S-ILS 26R Cat E visibility to RVR 4000, and S-LOC 26R Cat C/D/E visibility to 1 3/8 SM.		ALS F-2 A	MISSED APPROACH: Climb to 600 then climbing right turn to 3000 on IAH VORTAC R-344 to PEPBI INT/IAH 20 DME and hold.		
D-ATIS 124.05	HOUSTON APP CON 120.05 379.1 EAST 124.35 316.15 WEST	HOUSTON TOWER 120.725 290.2	GND CON 118.575	CLNC DEL 128.1	CPDLC



SC-5, 31 DEC 2020 to 28 JAN 2021

SC-5, 31 DEC 2020 to 28 JAN 2021