

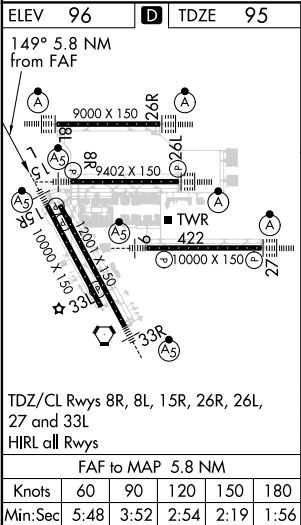
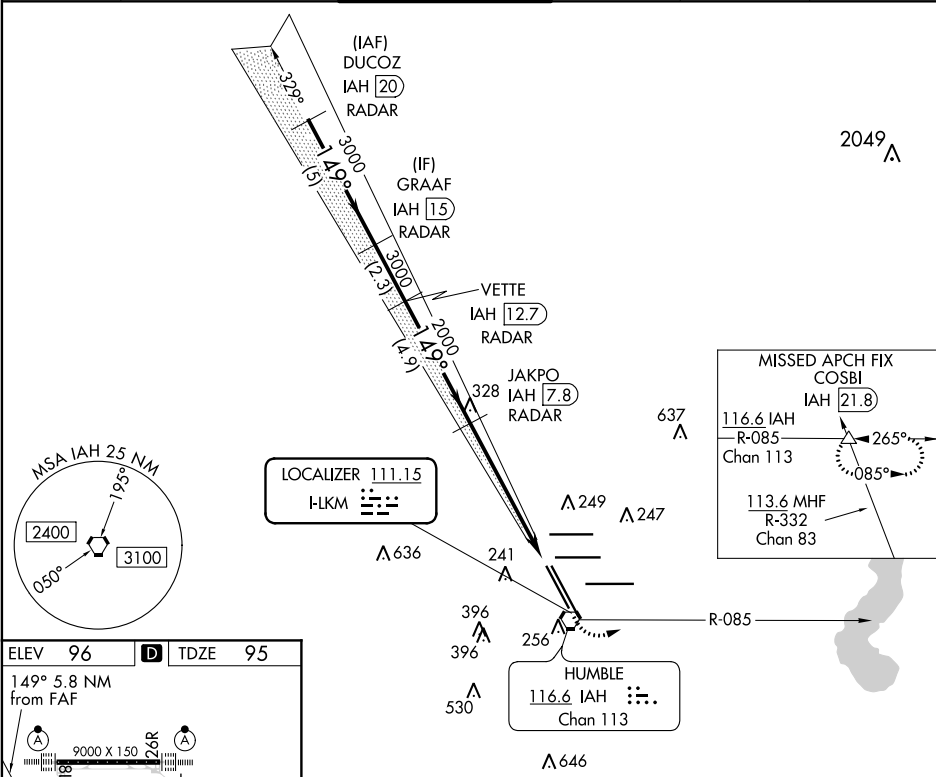
LOC I-LKM	APP CRS	Rwy Idg	9999
111.15	149°	TDZE	95
		Apt Elev	96

ILS or LOC RWY 15R

GEORGE BUSH INTERCONTINENTAL/HOUSTON (IAH)

RADAR required for procedure entry. DME or RADAR required.		MALSR	MISSED APPROACH: Climb to 1000 then climbing left turn to 2000 on IAH VORTAC R-085 to COSBI INT/IAH 21.8 DME and hold.
DME from IAH VORTAC. Simultaneous reception of I-LKM and IAH DME required. For inop ALS, increase S-ILS 15R Cat E visibility to RVR 4000, and S-LOC 15R Cat C/D/E visibility to 1 3/8 SM.			

D-ATIS 124.05	HOUSTON APP CON 120.05 379.1 EAST 124.35 316.15 WEST	HOUSTON TOWER 127.3 288.25	GND CON 121.7	CLNC DEL 128.1	CPDLC
------------------	--	-------------------------------	------------------	-------------------	-------



ELEV 96 D TDZE 95		149° 5.8 NM from FAF	
TDZ/CL Rwy 8, 8L, 15R, 26R, 26L, 27 and 33L		HIRL all Rwys	
FAF to MAP 5.8 NM		Knots 60 90 120 150 180	
Min:Sec 5:48 3:52 2:54 2:19 1:56			
CATEGORY A		S-ILS 15R 295/18 200 (200-1/2)	
S-LOC 15R 580/24 485 (500-1/2)		580/50 485 (500-1)	

SC-5, 31 DEC 2020 to 28 JAN 2021

SC-5, 31 DEC 2020 to 28 JAN 2021