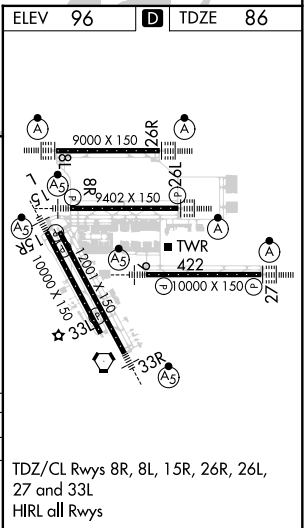
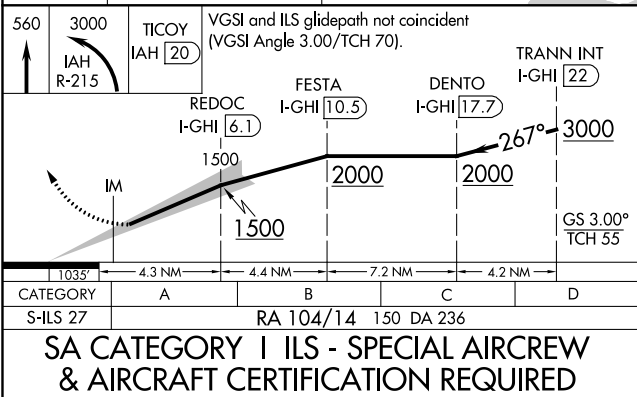
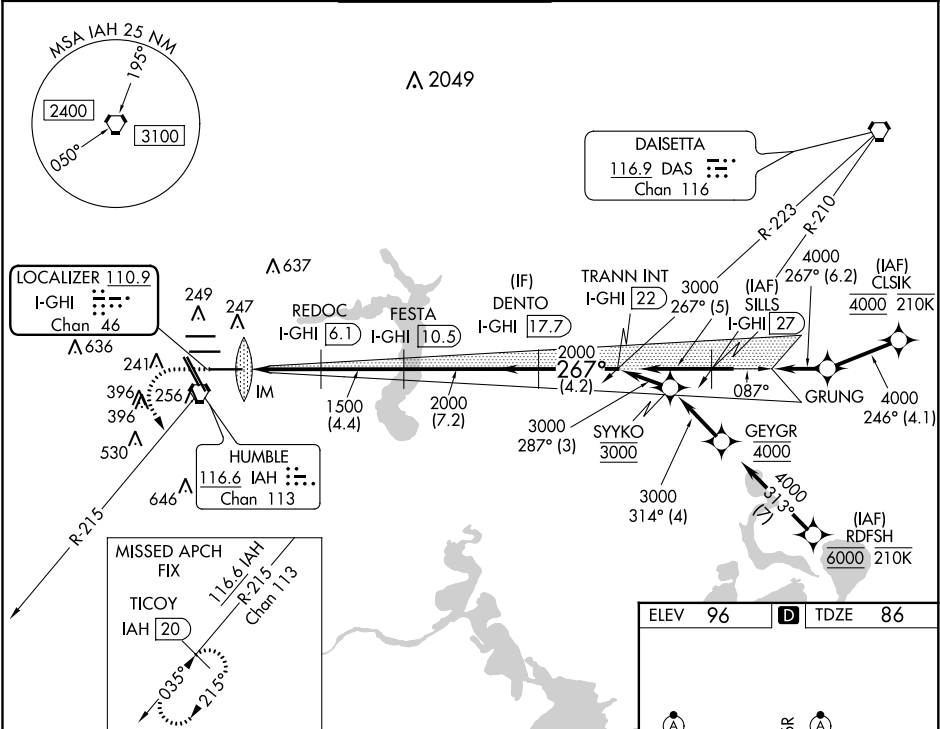


LOC/DME I-GHI	APP CRS	Rwy Idg	10000
110.9	267°	TDZE	86
Chan 46		Apt Elev	96

ILS RWY 27 (SA CAT I)  
GEORGE BUSH INTERCONTINENTAL/HOUSTON (IAH)

From CLSIK, RDFS: RNAV 1-GPS required. RNAV 1-GPS and RADAR required for procedure entry.	ALSIF-2	MISSED APPROACH: Climb to 560 then climbing left turn to 3000 on IAH VORTAC R-215 to TICOO/IAH 20 DME and hold.
Simultaneous approach authorized. Requires specific OPSPEC, MSPEC, or LOA approval and use of HUD to DH.		

D-ATIS	HOUSTON APP CON	HOUSTON TOWER	GND CON	CLNC DEL	CPDLC
124.05	120.05 379.1 EAST 124.35 316.15 WEST	135.15 290.2	118.575	128.1	



SC-5, 31 DEC 2020 to 28 JAN 2021

SC-5, 31 DEC 2020 to 28 JAN 2021