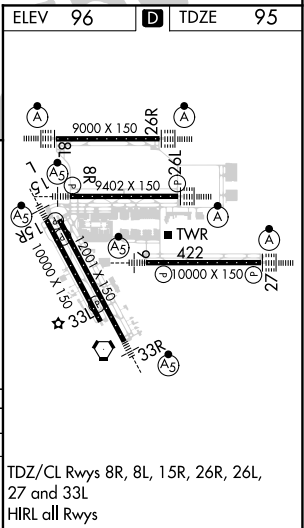
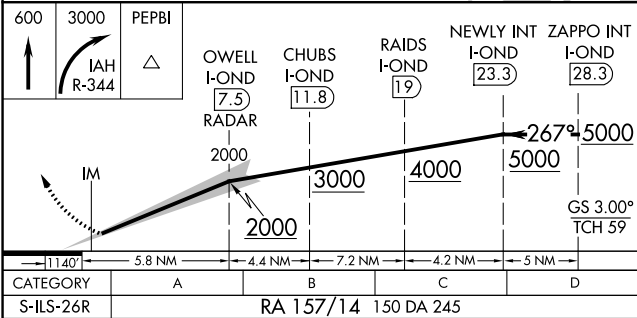
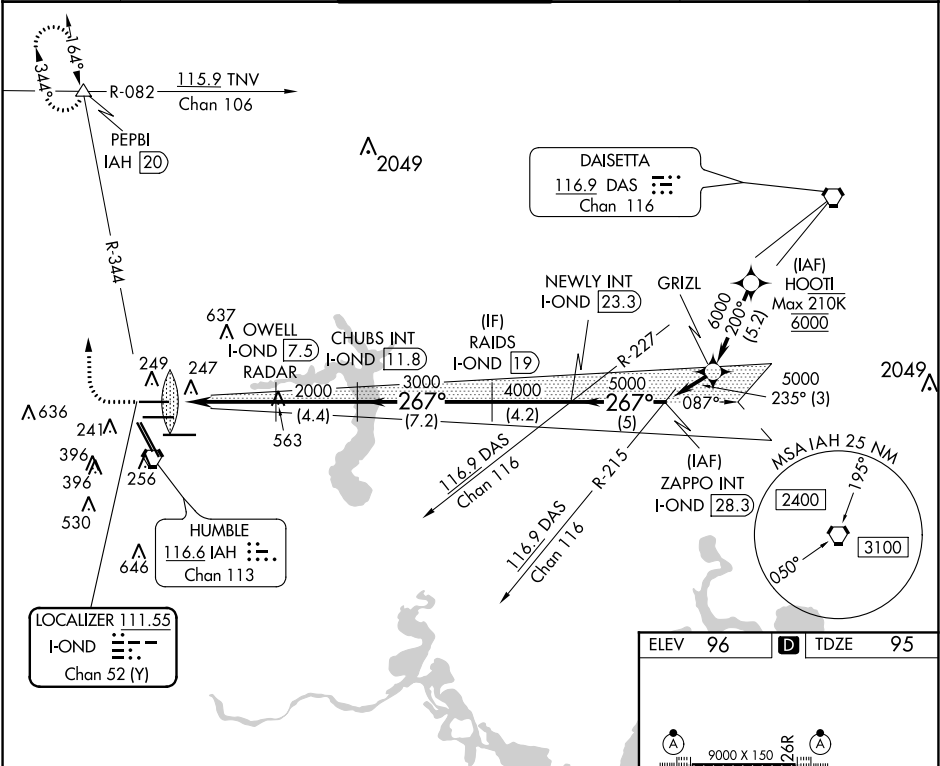


| | | |
|--|------------------------|---|
| LOC/DME I-OND 111.55 Chan 52 (Y) | APP CRS 267° | Rwy Idg 9000 TDZE 95 Apt Elev 96 |
|--|------------------------|---|

ILS RWY 26R(SA CAT I)

GEORGE BUSH INTERCONTINENTAL/HOUSTON (IAH)

| | | | | | |
|--|--|---------------------------------------|---------------------------|---|-------|
| DME required. From HOOIT: RNAV 1-GPS required. Simultaneous approach authorized with Rwy 26L and Rwy 27. Requires specific OPSPEC, MSPEC or LOA approval and use of HUD to DH. | | | ALSF-2 | MISSED APPROACH: Climb to 600 then climbing right turn to 3000 on IAH VORTAC R-344 to PEPBI INT/ IAH 20 DME and hold. | |
| D-ATIS 124.05 | HOUSTON APP CON 120.05 379.1 EAST 124.35 316.15 WEST | HOUSTON TOWER 120.725 290.2 | GND CON 118.575 | CLNC DEL 128.1 | CPDLC |



SA CATEGORY I ILS - SPECIAL AIRCREW & AIRCRAFT CERTIFICATION REQUIRED

TDZ/CL Rwy's 8R, 8L, 15R, 26R, 26L, 27 and 33L
HIRL all Rwy's

SC-5, 31 DEC 2020 to 28 JAN 2021

SC-5, 31 DEC 2020 to 28 JAN 2021