

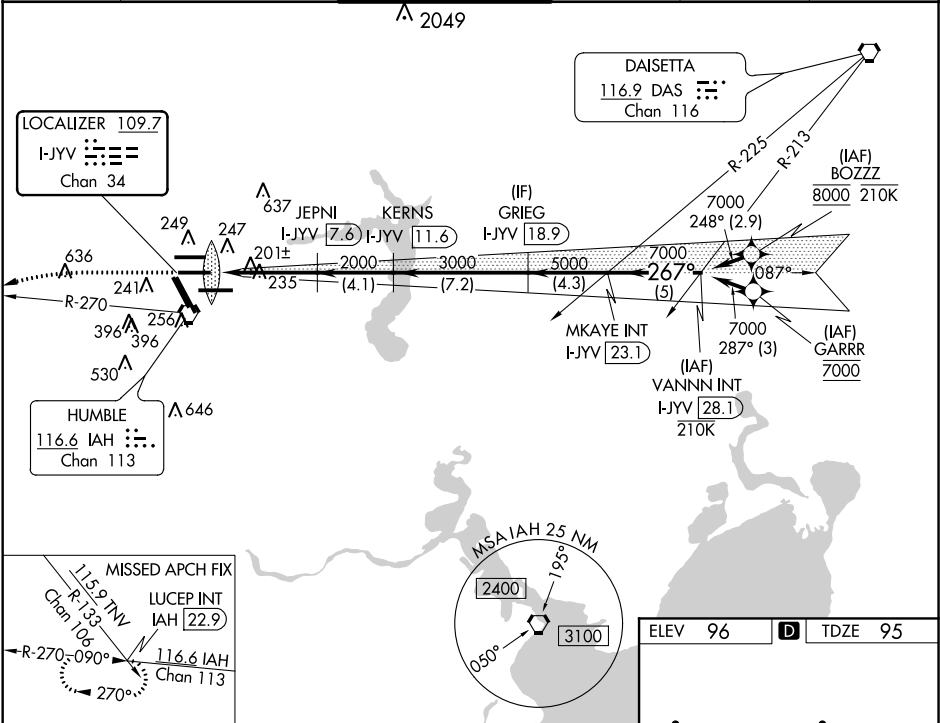
LOC/DME I-JYV	APP CRS	Rwy Idg	9402
109.7	267°	TDZE	95
Chan 34		Apt Elev	96

ILS RWY 26L (CAT II & III)

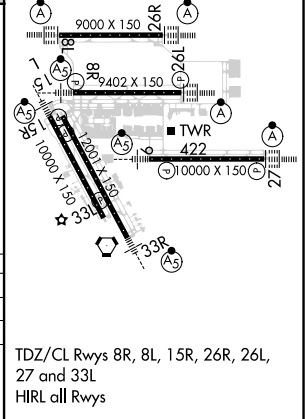
GEORGE BUSH INTERCONTINENTAL/HOUSTON (IAH)

DME required. From BOZZZ, GARRR: RNAV 1-GPS required.	ALSF-2	MISSED APPROACH: Climb to 3000 then left turn heading 240° and IAH VORTAC R-270 to LUCEP INT/IAH 22.9 DME and hold.
Simultaneous approach authorized with Rwy 26R and Rwy 27. Cat II: RVR 1000 authorized with specific OPSPEC, MSPEC, or LOA approval and use of autoland or HUD to touchdown.		

D-ATIS	HOUSTON APP CON	HOUSTON TOWER	GND CON	CLNC DEL	CPDLC
124.05	120.05 379.1 EAST 124.35 316.15 WEST	125.35 290.2	118.575	128.1	



3000	hdg 240°	IAH R-270	LUCEP INT	KERN I-JYV 7.6	GRIEG I-JYV 18.9	MKAYE INT I-JYV 23.1	VANNIN INT I-JYV 28.1
VGSI and ILS glidepath not coincident (VGSI Angle 3.00/TCH 71).							
IM 190							
2000 3000 5000 7000							
GS 3.00° TCH 56							
-1042- 5.8 NM 4.1 NM 7.2 NM 4.3 NM 5 NM							
CATEGORY	A		B		C		D
S-ILS 26L	CAT II RA 100/12		100 DA 195				
S-ILS 26L	CAT III RVR 06						
CATEGORY II & III ILS - SPECIAL AIRCREW & AIRCRAFT CERTIFICATION REQUIRED							



SC-5, 31 DEC 2020 to 28 JAN 2021

SC-5, 31 DEC 2020 to 28 JAN 2021