

LAAS	APP CRS	Rwy Idg	9402
CH 20251		TDZE	96
RPI GIAH	087°	Apt Elev	96

GLS RWY 8R

GEORGE BUSH INTERCONTINENTAL/HOUSTON (IAH)

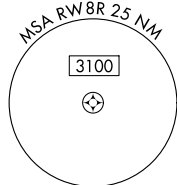
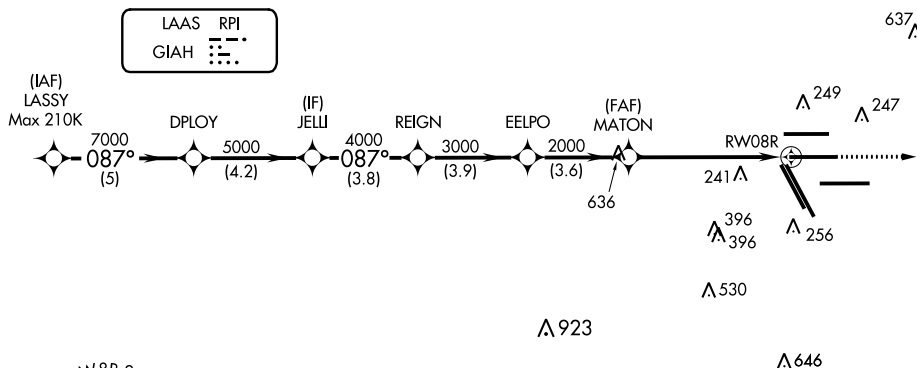
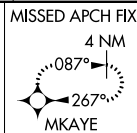
V For inop MALSR, increase GLS all Cats visibility to RVR 4000. Simultaneous approach
A NA authorized with Rwy 8L and Rwy 9. DME/DME RNP-0.3 NA. GPS required. Use of
FD or AP providing RNAV track guidance required during simultaneous operations.
Autoland approach NA.

MALSR

MISSED APPROACH:
Climb to 3000 direct
MKAYE and hold.

D-ATIS 124.05	HOUSTON APP CON 120.05 379.1 EAST 124.35 316.15 WEST	HOUSTON TOWER 125.35 290.2	GND CON 118.575	CLNC DEL 128.1	CPDLC
-------------------------	--	--------------------------------------	---------------------------	--------------------------	-------

RADAR REQUIRED



VGSI and GLS glidepath not coincident (VGSI Angle 3.00/TCH 72).

3000 MKAYE

LASSY DPLOY JELLI REIGN EELPO MATON RW08R

7000 087° 7000 5000 4000 3000 2000

GLS unusable inside DA.

GP 3.00° TCH 55

5 NM 4.2 NM 3.8 NM 3.9 NM 3.6 NM 5.8 NM

CATEGORY	A	B	C	D	E
GLS DA	296/18 200 (200-1/2)				