

LAAS CH <b>21073</b> RPI <b>GBZU</b>	APP CRS <b>087°</b>	Rwy Idg <b>9000</b> TDZE <b>95</b> Apt Elev <b>96</b>
--	------------------------	---

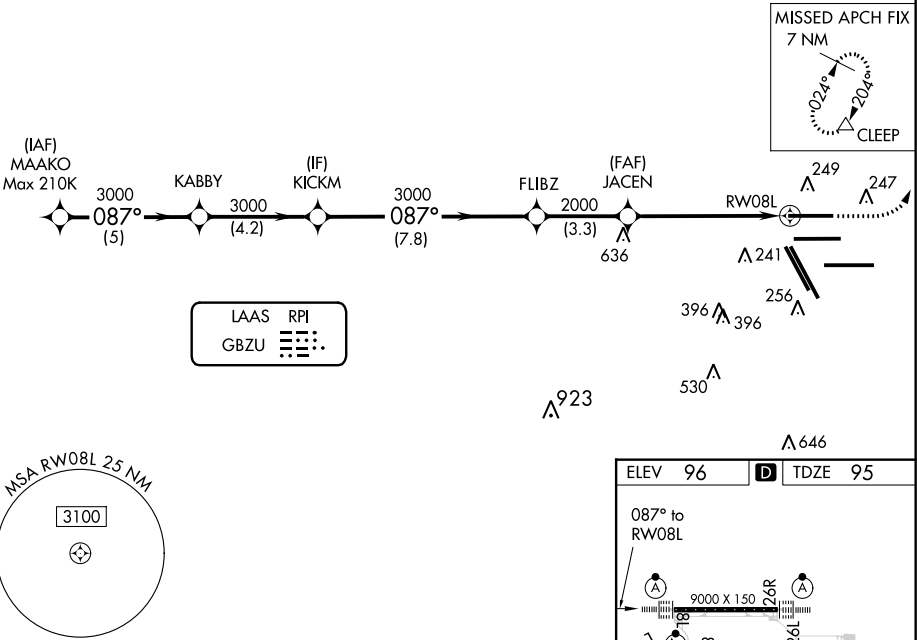
GLS RWY 8L

GEORGE BUSH INTERCONTINENTAL/HOUSTON (IAH)

<b>NA</b>	For inop ALSF, increase GLS all Cats visibility to RVR 4000. Simultaneous approach authorized with Rwy 8R and Rwy 9. DME/DME RNP-0.3 NA. GPS Required. Autoland approach NA. Use of FD or AP providing RNAV track guidance required during simultaneous operations.	ALSF-2 	MISSED APPROACH: Climb to 580 then climbing left turn to 4000 direct CLEEP and hold.
-----------	---	------------	--

D-ATIS <b>124.05</b>	HOUSTON APP CON <b>120.05 379.1 EAST</b> <b>124.35 316.15 WEST</b>	HOUSTON TOWER <b>120.72 290.2</b>	GND CON <b>121.7</b>	CLNC DEL <b>128.1</b>	CPDLC
-------------------------	--	--------------------------------------	-------------------------	--------------------------	-------

RADAR REQUIRED



GLS unusable inside DA.				
	MAAKO	KABBY	KICKM	FLIBZ
	3000	3000	3000	3000
	GP 3.00°	087°	087°	087°
	TCH 59°			
	5 NM	4.2 NM	7.8 NM	3.3 NM
CATEGORY	A	B	C	D
GLS	DA	295/18	200 (200-1/2)	

