

LAAS CH 20662 RPI GJYV	APP CRS 267°	Rwy Idg 9402 TDZE 95 Apt Elev 96
--	------------------------	---

GLS RWY 26L

GEORGE BUSH INTERCONTINENTAL/HOUSTON (IAH)

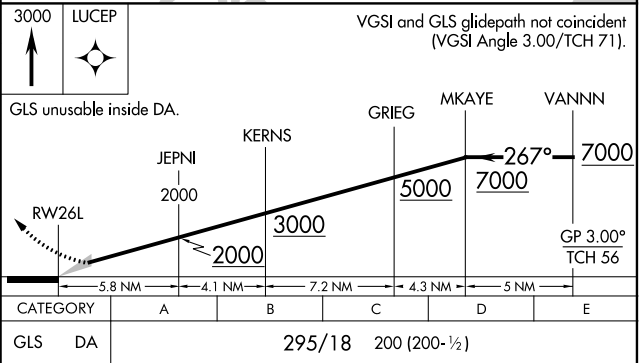
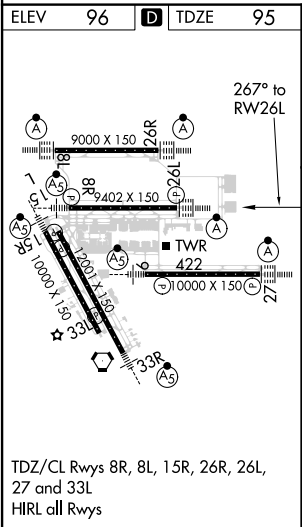
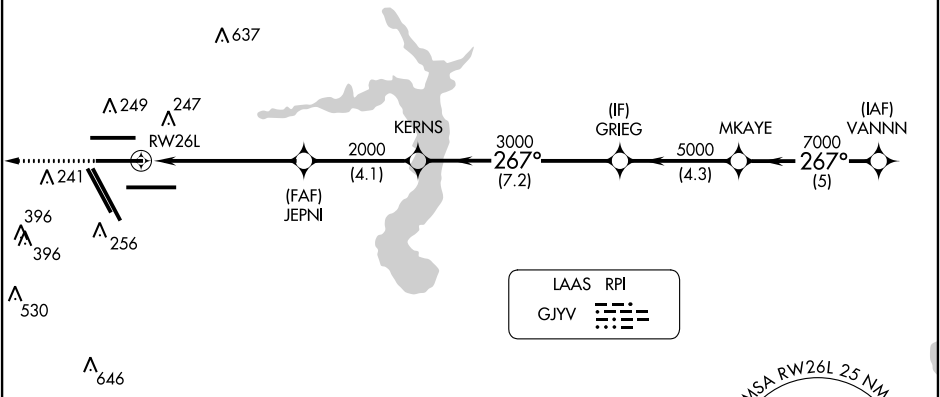
<div><div><div></div><div>NA</div></div><div>For inop ALSF, increase GLS all Cats visibility to RVR 4000. Simultaneous approach authorized with Rwy 26R and Rwy 27. DME/DME RNP-0.3 NA. GPS required. Use of FD or AP providing RNAV track guidance required during simultaneous operations. Autoland approach NA.</div></div>	<div>ALSF-2</div> <div><div><div></div><div></div></div><div></div></div>	<div>MISSED APPROACH: Climb to 3000 direct LUCEP and hold.</div>			
<div><div>D-ATIS</div><div>124.05</div></div>	<div><div>HOUSTON APP CON</div><div>120.05 379.1 EAST</div><div>124.35 316.15 WEST</div></div>	<div><div>HOUSTON TOWER</div><div>125.35 290.2</div></div>	<div><div>GND CON</div><div>118.575</div></div>	<div><div>CLNC DEL</div><div>128.1</div></div>	<div>CPDLC</div>

MISSED APCH FIX
LUCEP

4 NM

Λ 995

RADAR REQUIRED



SC-5, 31 DEC 2020 to 28 JAN 2021

SC-5, 31 DEC 2020 to 28 JAN 2021