

D-ATIS
124.05
CLNC DEL
128.1
CPDLC
GND CON
118.575 (Rwys 15L/R, 33L/R)
121.7 (Rwys 8L/R, 26L/R, 9/27)
HOUSTON TOWER
120.725 290.2 (Rwys 8L/26R)
125.35 290.2 (Rwys 8R/26L)
127.3 288.25 (Rwys 15L/R, 33L/R)
135.15 290.2 (Rwys 9/27)
HOUSTON DEP CON
132.25 285.425

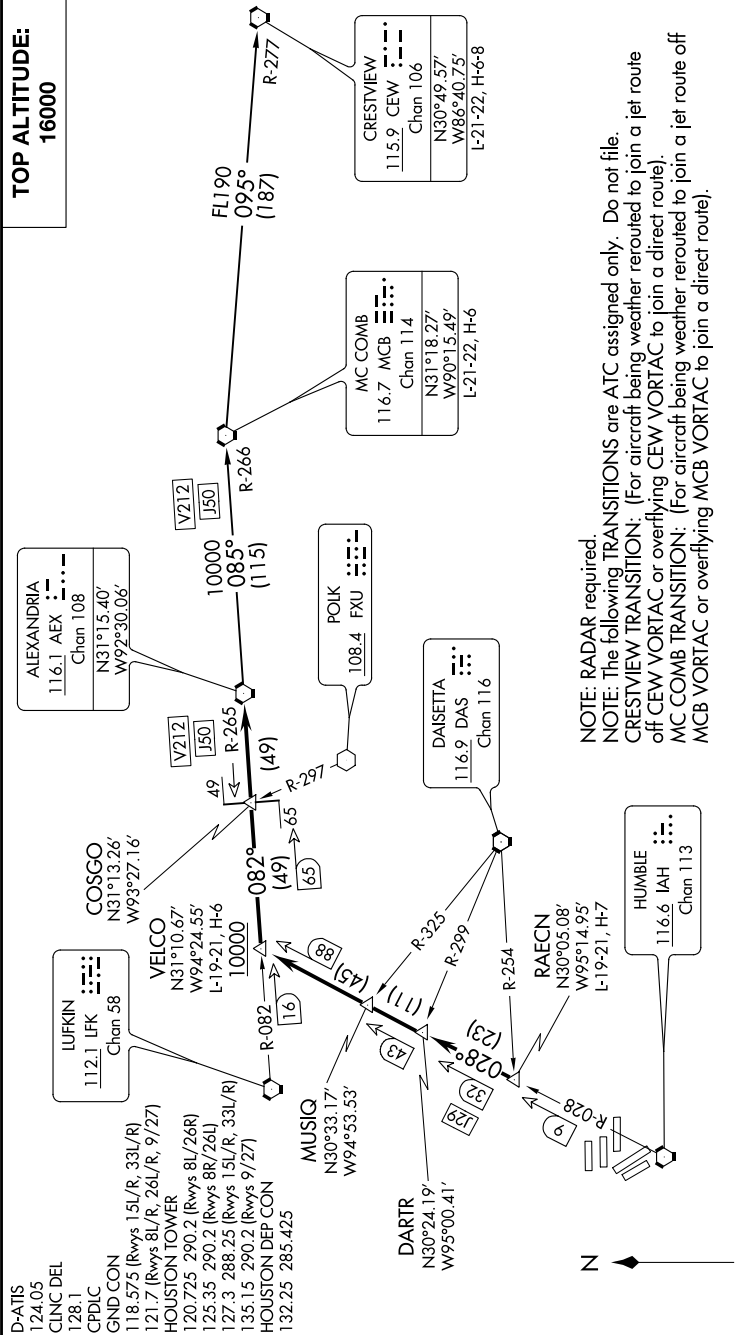
ALEXANDRIA TWO DEPARTURE

(AEX2.AEX) 05DEC19

GEORGE BUSH INTERCONTINENTAL/HOUSTON (IAH)

AL-5461 (FAA)

HOUSTON, TEXAS



NOTE: RADAR required.
NOTE: The following TRANSITIONS are ATC assigned only. Do not file.
CRESTVIEW TRANSITION: (For aircraft being weather rerouted to join a jet route off CEW VORTAC or overflying CEW VORTAC to join a direct route).
MC COMB TRANSITION: (For aircraft being weather rerouted to join a jet route off MCB VORTAC or overflying MCB VORTAC to join a direct route).

TAKEOFF MINIMUMS

Rwys 8L/R, 9, 27, 15L/R, 26L/R, 33L/R: Standard.

NOTE: Chart not to scale.

(NARRATIVE ON FOLLOWING PAGE)