

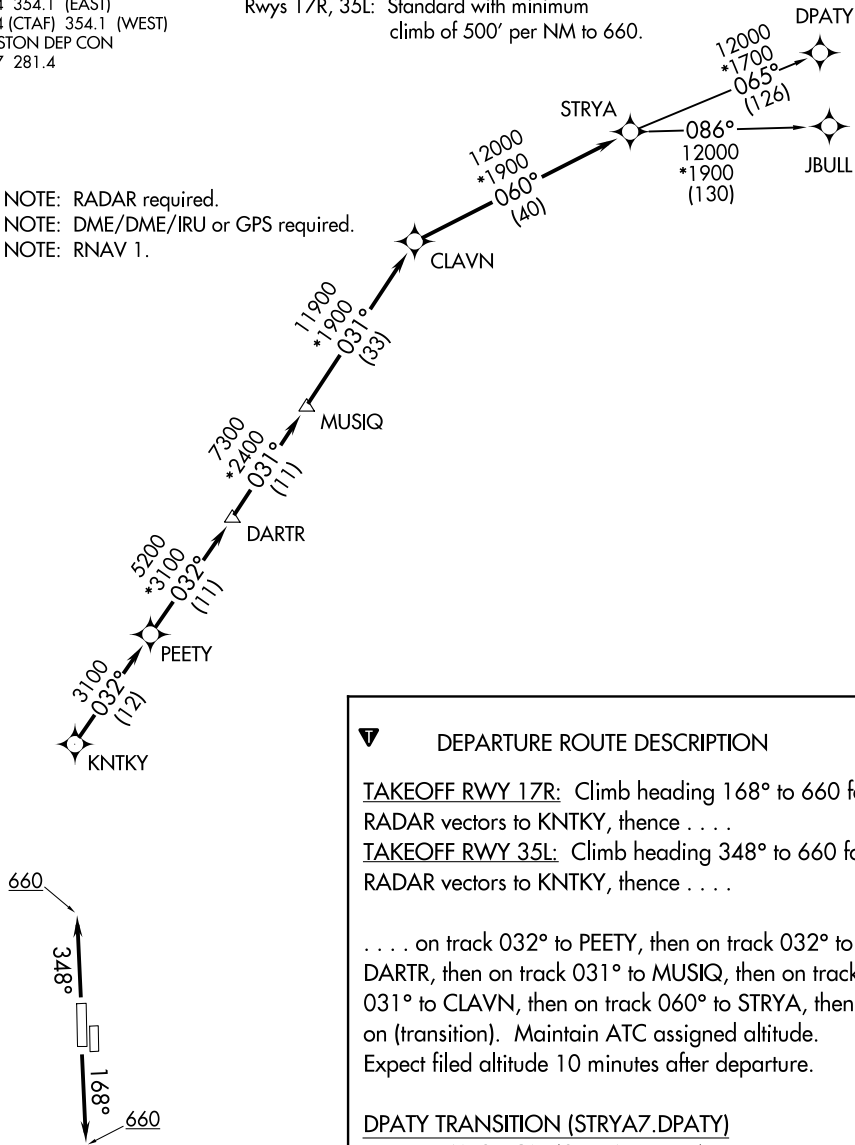
ATIS
128.375
CLNC DEL
119.45
GND CON
121.8 239.0
HOOKS TOWER★
127.4 354.1 (EAST)
118.4 (CTAF) 354.1 (WEST)
HOUSTON DEP CON
119.7 281.4

TOP ALTITUDE: ASSIGNED BY ATC

TAKEOFF MINIMUMS

Rwys 17L, 35R: NA-Environmental.
Waterway 17, 35: NA-Air Traffic.
Rwys 17R, 35L: Standard with minimum
climb of 500' per NM to 660.

NOTE: RADAR required.
NOTE: DME/DME/IRU or GPS required.
NOTE: RNAV 1.



DEPARTURE ROUTE DESCRIPTION

TAKEOFF RWY 17R: Climb heading 168° to 660 for
RADAR vectors to KNTKY, thence
TAKEOFF RWY 35L: Climb heading 348° to 660 for
RADAR vectors to KNTKY, thence

. . . . on track 032° to PEETY, then on track 032° to
DARTR, then on track 031° to MUSIQ, then on track
031° to CLAVN, then on track 060° to STRYA, then
on (transition). Maintain ATC assigned altitude.
Expect filed altitude 10 minutes after departure.

DPATY TRANSITION (STRYA7.DPATY)
JBULL TRANSITION (STRYA7.JBULL)

NOTE: Chart not to scale.