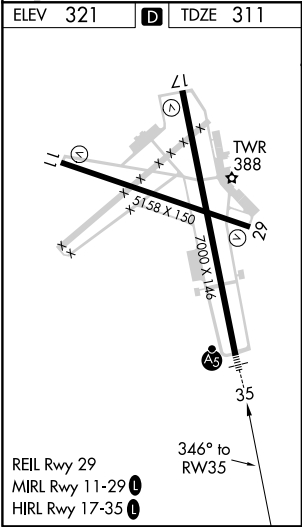
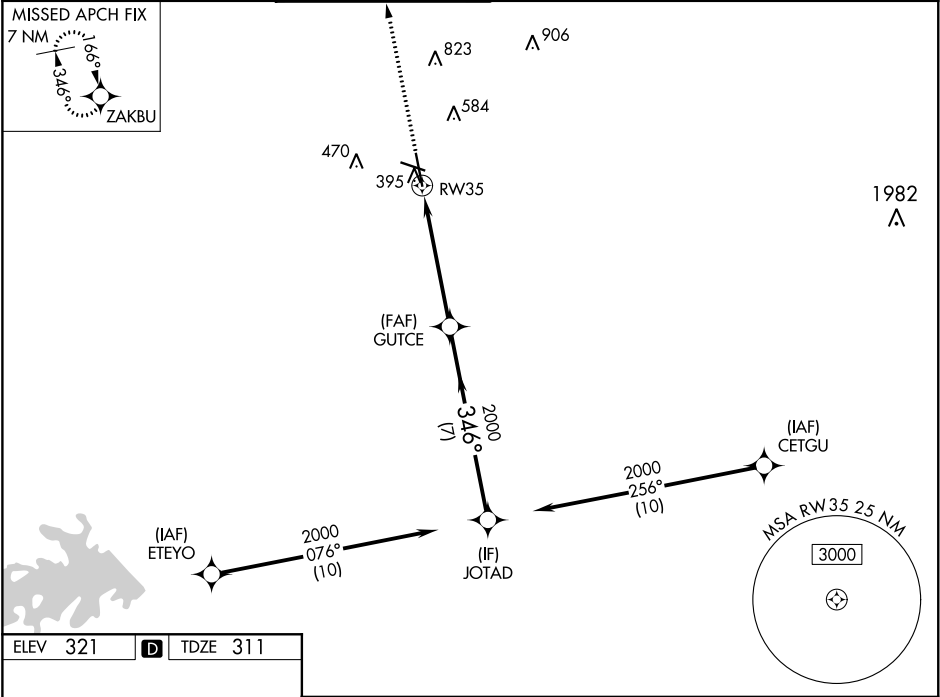


WAAS CH 63122 W35A	APP CRS 346°	Rwy Idg TDZE Apt Elev	7000 311 321
--	------------------------	-----------------------------	---

RNAV (GPS) RWY 35
EASTERWOOD FIELD (CLL)

RNP APCH. ▼▲ For uncompensated Baro-VNAV systems, LNAV/VNAV NA below -3°C or above 54°C. For inop ALS, increase LPV Cat E and LNAV/VNAV all Cats visibility to ¾ SM, increase LNAV Cat E visibility to 1¾ SM.				MALSR A5	MISSED APPROACH: Climb to 2100 direct ZAKBU and hold.	
ATIS 126.85	HOUSTON APP CON 134.3 360.85	EASTERWOOD TOWER ★ 118.5 (CTAF) 0 284.7	GND CON 128.7 284.7	CLNC DEL 128.7	CLNC DEL 120.4 (when twr closed)	UNICOM 122.95



2100 ZAKBU		GUTCE 2000		JOTAD 2000	
*LNAV only.		*1.3 NM to RW35		GP 3.00° TCH 55	
RW35		1.3 NM		3.9 NM	
CATEGORY		A	B	C	D
LPV DA		511-½		200 (200-½)	
LNAV/VNAV DA		563-½		252 (300-½)	
LNAV MDA		760-½	449 (500-½)	760-¾	449 (500-¾)
CIRCLING		860-1 539 (600-1)	880-1 559 (600-1)	1000-2 679 (700-2)	1180-2¾ 859 (900-2¾)

SC-5, 31 DEC 2020 to 28 JAN 2021

SC-5, 31 DEC 2020 to 28 JAN 2021