

WAAS CH 50105 W07A	APP CRS 073°	Rwy Idg TDZE Apt Elev	5400 287 296
--	------------------------	-----------------------------	---

RNAV (GPS) RWY 7
ANGELINA COUNTY (LKF)

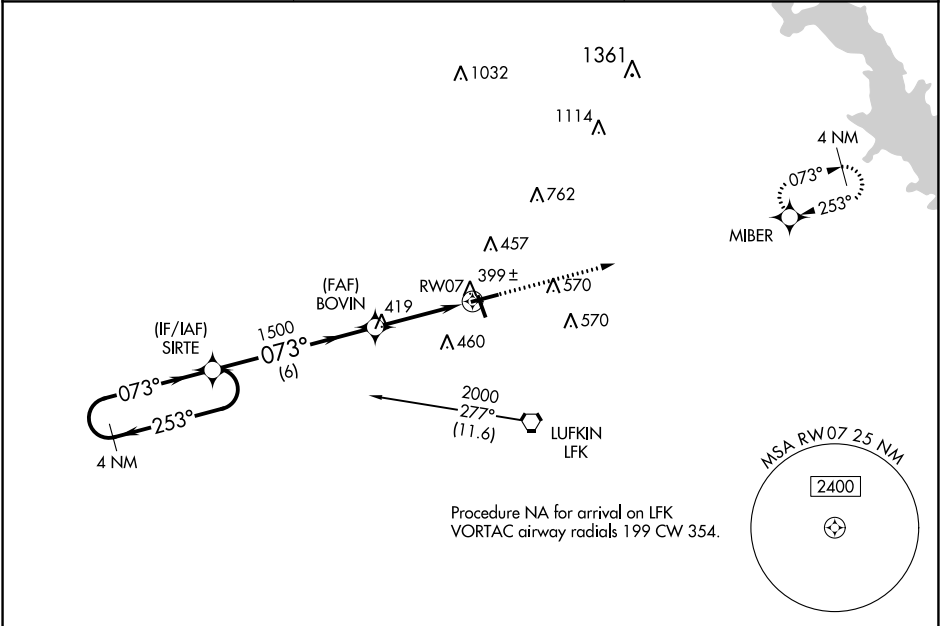
▼ For uncompensated Baro-VNAV systems, LNAV/VNAV NA below -4°C (25°F) or above 54°C (130°F). DME/DME RNP-0.3 NA. Circling Rwy 16, 25 NA at night.

MALSR

A5

MISSED APPROACH: Climb to 2000 direct MIBER and hold.

ASOS 120.625	HOUSTON CENTER 125.175 285.575	UNICOM 123.0 (CTAF) 0
------------------------	--	---------------------------------



ELEV 296 **TDZE 287**

4 NM Holding Pattern **SIRTE**

2000 ← **253°** / **073°** →

GP 3.00°
TCH 50

BOVIN **1500**

6 NM **2.7 NM** **1 NM**

RW07

***LNAV only.**

***1 NM to RW07**

2000 **MIBER**

CATEGORY	A	B	C	D
LPV DA	537-½ 250 (300-½)			
LNAV/VNAV DA	563-½ 276 (300-½)			
LNAV MDA	660-½ 373 (400-½)	660-⅝ 373 (400-⅝)		
CIRCLING	740-1 444 (500-1)	760-1 464 (500-1)	880-1½ 584 (600-1½)	1140-2¾ 844 (900-2¾)

MRL Rwy 7-25 and 16-34 0