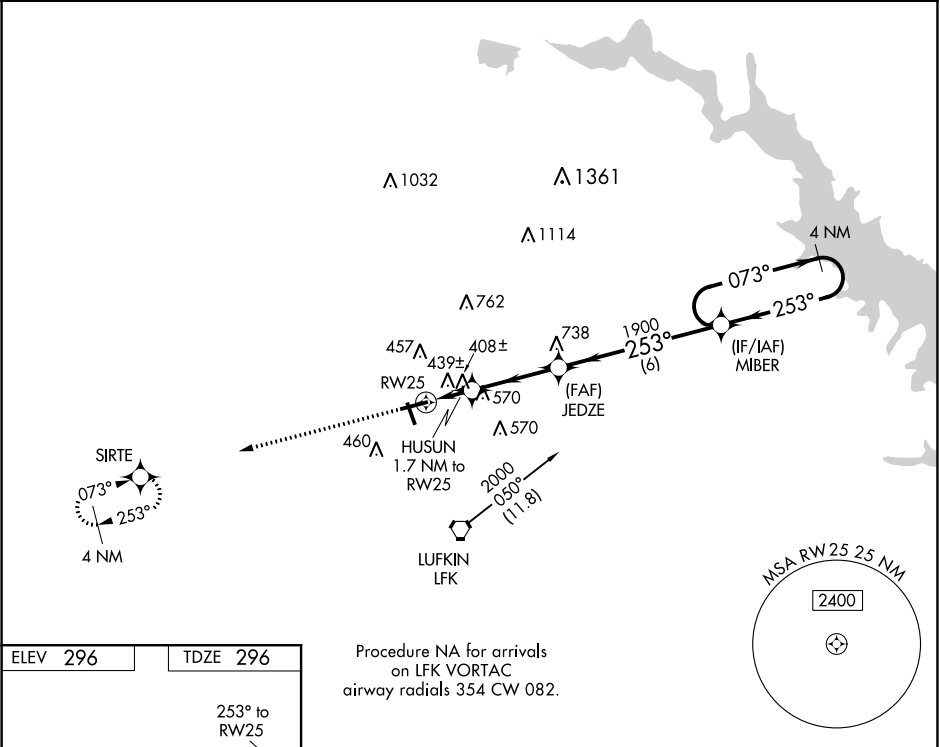


WAAS CH 72641 W25A	APP CRS 253°	Rwy Idg TDZE 296 Apt Elev 296
--	------------------------	---

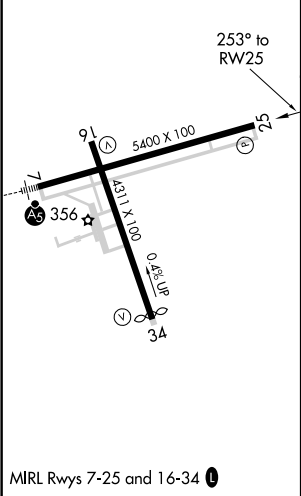
RNAV (GPS) RWY 25
ANGELINA COUNTY (LUFK)

<div><div><div></div><div></div></div><div>DME/DME RNP-0.3 NA. Straight-in Rwy 25 NA at night, Circling Rwy 16, 25 NA at night. Rwy 25 helicopter visibility reduction below 1 SM NA.</div></div>	MISSED APPROACH: Climb to 2000 direct SIRTE and hold.
---	---

ASOS 120.625	HOUSTON CENTER 125.175 285.575	UNICOM 123.0 (CTAF) 0
------------------------	--	---------------------------------



ELEV 296	TDZE 296
-----------------	-----------------



Procedure NA for arrivals on LFK VORTAC airway radials 354 CW 082.				
<div><div><div>2000</div><div>SIRTE</div></div><div><div>JEDZE</div><div>HUSUN 1.7 NM to RW25</div><div>RW25</div><div>MIBER 4 NM Holding Pattern</div></div></div>				
<div><div>1.7 NM</div><div>3.2 NM</div><div>6 NM</div></div>				
CATEGORY	A	B	C	D
LP MDA	660-1 364 (400-1)			
LNNAV MDA	700-1	404 (500-1)	700-1½	404 (500-1½)
<div><div></div><div>CIRCLING</div></div>	740-1 444 (500-1)	760-1 464 (500-1)	880-1½ 584 (600-1½)	1140-2¾ 844 (900-2¾)

SC-5, 31 DEC 2020 to 28 JAN 2021

SC-5, 31 DEC 2020 to 28 JAN 2021