

VOR/DME BPT
114.5
Chan **92**

APP CRS
359°

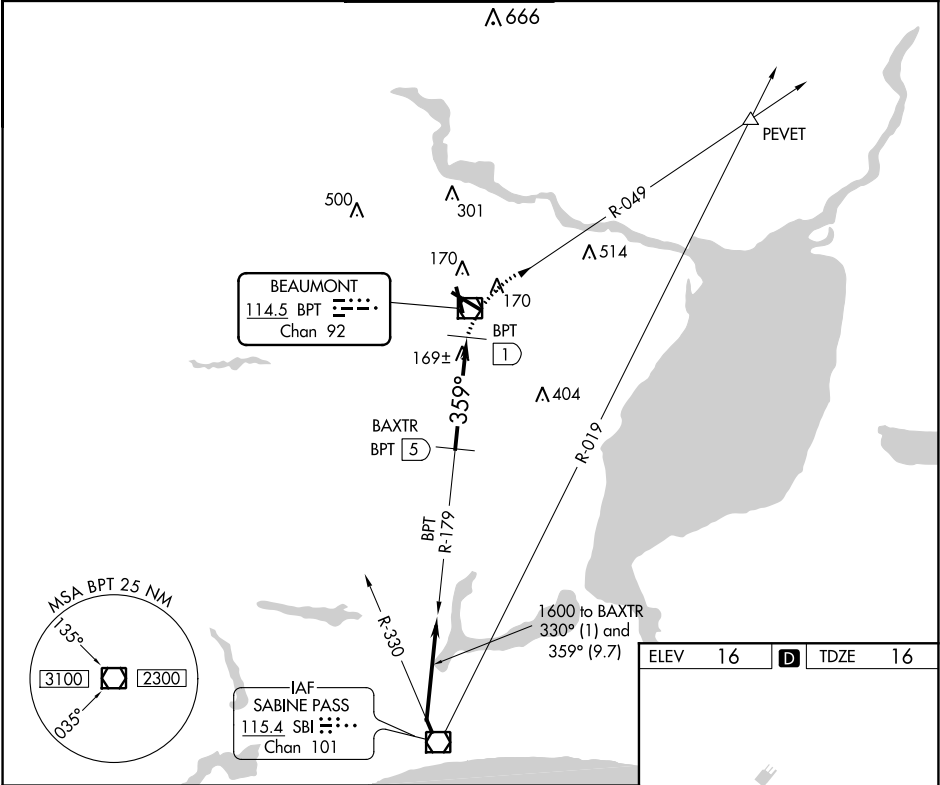
Rwy Idg
TDZE **16**
Apt Elev **16**

VOR/DME RWY 34
JACK BROOKS RGNL (BPT)

When local altimeter setting not received, use Orange County altimeter setting and increase all MDA 40 feet, increase S-34 visibility Cat C and D ¼ mile and Circling Cat E visibility ¼ mile.

MISSED APPROACH: Climb to 2000 via BPT VOR/DME R-049 to PEVET INT.

ATIS 126.3	HOUSTON APP CON 121.3 377.1	BEAUMONT TOWER★ 119.5 (CTAF) 0	GND CON 124.85	CLNC DEL 118.3	UNICOM 122.95
----------------------	---------------------------------------	--	--------------------------	--------------------------	-------------------------



BAXTR
BPT 5

1600

Procedure Turn NA

2000

BPT R-049

PEVET

359°

2.97°

TCH 50

4 NM

0.9 NM

BPT 1

BPT VOR/DME

CATEGORY	A	B	C	D	E
S-34	500-1¼	484 (500-1¼)		500-1½ 484 (500-1½)	500-1¾ 484 (500-1¾)
CIRCLING	500-1¼	484 (500-1¼)	500-1½ 484 (500-1½)	580-2 564 (600-2)	820-2¾ 804 (900-2¾)

REIL Rwy
16, 30 and 34

HIRL Rwy
12-30, 16-34

TWR 126

6750 X 150

500 X 150

34

359° 4.9 NM from FAF

SC-5, 31 DEC 2020 to 28 JAN 2021

SC-5, 31 DEC 2020 to 28 JAN 2021