

LOC/DME I-BPT	APP CRS	Rwy Idg	6750
110.15	116°	TDZE	15
Chan 38(Y)		Apt Elev	15

ILS or LOC RWY 12

JACK BROOKS RGNL (BPT')

DME or RADAR required.

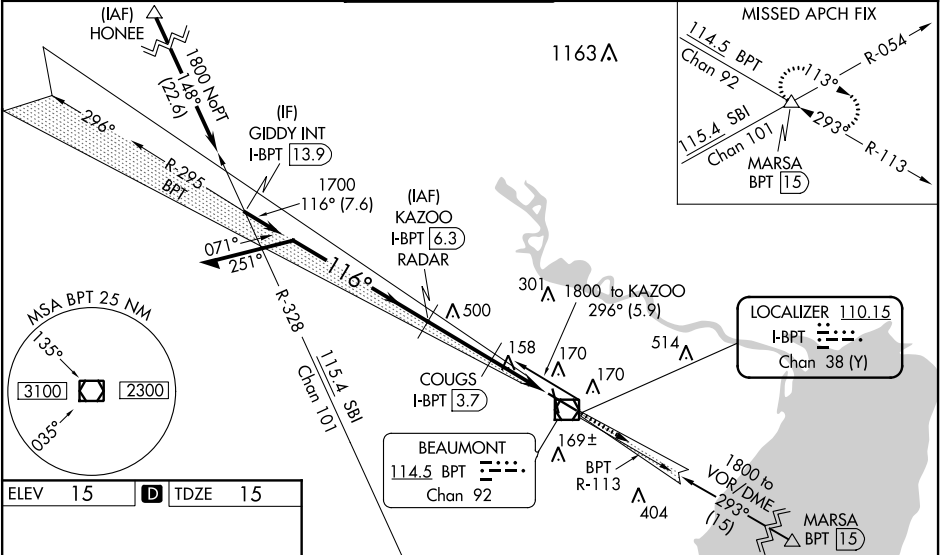
When local altimeter setting not received, use Orange County altimeter setting: increase S-ILS 12 DA to 246 feet; increase all MDAs 40 feet. COUGS Fix Minimums: increase S-LOC 12 Cat C/D/E visibility to RVR 5000 feet. For inop MALSR, increase S-ILS 12 Cat E visibility to RVR 4000, S-LOC 12 Cat E visibility to 2½ miles, COUGS Fix Minimums increase S-LOC 12 Cat C/D/E visibility to 1¾ mile. For inop MALSR, when using Orange County altimeter setting, increase S-ILS 12 Cat E visibility to RVR 4000, S-LOC 12 Cat C/D/E to 2½ miles. COUGS Fix Minimums: increase S-LOC 12 Cat C/D/E to 1¾ miles. VDP NA when using Orange County altimeter setting.

**RVR 1800 authorized with use of FD or AP or HUD to DA, NA when using Orange County altimeter setting.

MALSR

MISSED APPROACH:
Climb to 3000 on BPT VOR/DME R-113 to MARSA INT/BPT 15 DME and hold.

ATIS	HOUSTON APP CON	BEAUMONT TOWER*	GND CON	CLNC DEL	UNICOM
126.3	121.3 377.1	119.5 (CTAF) 0	124.85	118.3	122.95



ELEV 15 | D | TDZE 15

116° 5.1 NM from FAF

REIL Rwy 16, 30 and 34

HIRL Rwy 12-30, 16-34

FAF to MAP 5.1 NM

Knots	60	90	120	150	180
Min:Sec	5:06	3:24	2:33	2:02	1:42

Use I-BPT DME when on the localizer course.

Remain within 10 NM

*1800

GS 3.00° TCH 52

*Cat E procedure turn NA.

CATEGORY	A	B	C	D	E
S-ILS 12**	215/24 200 (200-½)				
S-LOC 12	820/24 805 (900-½)	820/40 805 (900-¾)	820-178	805 (900-1¾)	
COUGS FIX MINIMUMS (DME REQUIRED)					
S-LOC 12	460/24 445 (500-½)		460/45 445 (500-¾)		