

WAAS CH <b>82709</b> <b>W13A</b>	APP CRS <b>128°</b>	Rwy ldg <b>9111</b> TDZE <b>115</b> Apt Elev <b>115</b>
--	------------------------	---

RNAV (GPS) RWY 13L

VICTORIA RGNL (VCT)

⚠

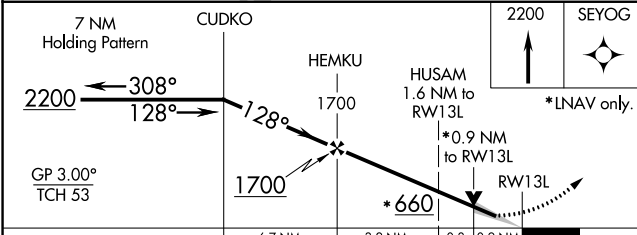
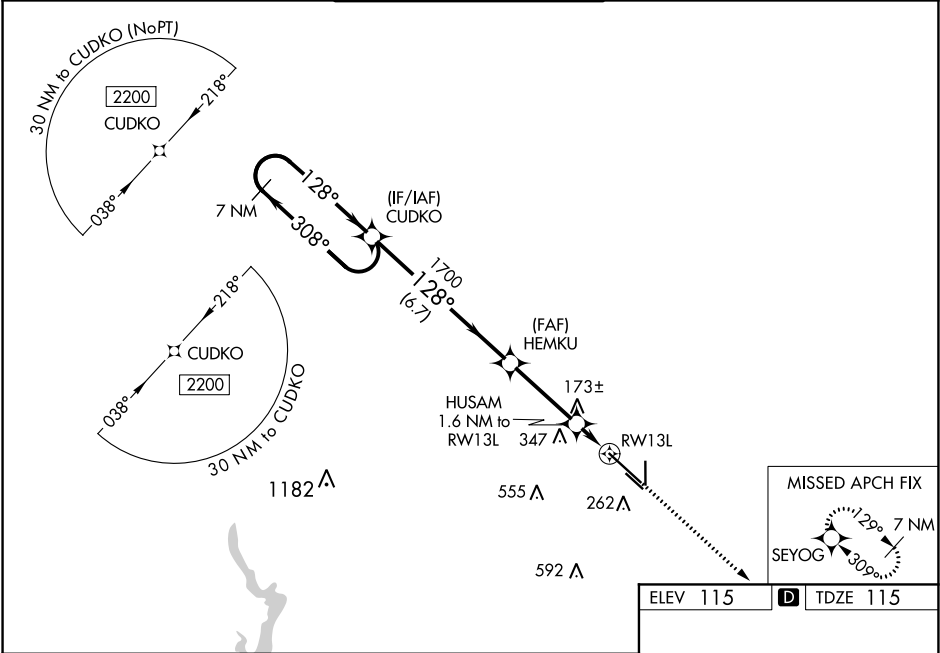
Baro-VNAV NA when using Port Lavaca altimeter setting. For uncompensated Baro-VNAV systems, LNAV/VNAV NA below -15°C (5°F) or above 43°C (109°F). When local altimeter setting not received, use Port Lavaca altimeter setting and increase all DA 52 feet and all MDA 60 feet. Increase LNAV Cats C/D/E visibility to ¾ mile. DME/DME RNP-0.3 NA. VDP NA with Port Lavaca altimeter setting. For inop MALSR, increase LPV and LNAV/VNAV Cat E visibility to ¾ mile and LNAV Cat E visibility to 1 mile. For inop MALSR when using Port Lavaca altimeter setting, increase LPV Cat E visibility to ¾ mile, LNAV/VNAV all Cats visibility to 1 mile and LNAV Cats C/D/E visibility to 1½ mile.

MALSR

MISSED APPROACH:

Climb to 2200  
direct SEYOG  
and hold.

ATIS <b>119.025</b>	HOUSTON CENTER <b>135.05 353.6</b>	VICTORIA TOWER ★ <b>126.075 (CTAF) 0 257.95</b>	GND CON <b>120.525 239.25</b>	UNICOM <b>122.7</b>
------------------------	---------------------------------------	--	----------------------------------	------------------------



CATEGORY	A	B	C	D	E
LPV DA		315-½	200 (200-½)		
LNAV/VNAV DA		365-½	250 (300-½)		
LNAV MDA		440-½	325 (400-½)		
CIRCLING	580-1	465 (500-1)	580-1½ 465 (500-1½)	680-2 565 (600-2)	NA

ELEV 115 D TDZE 115

MIRL Rwy 18-36  
REIL Rwy 18 and 36  
HIRL Rwy 13L-31R 0

SC-5, 31 DEC 2020 to 28 JAN 2021

SC-5, 31 DEC 2020 to 28 JAN 2021