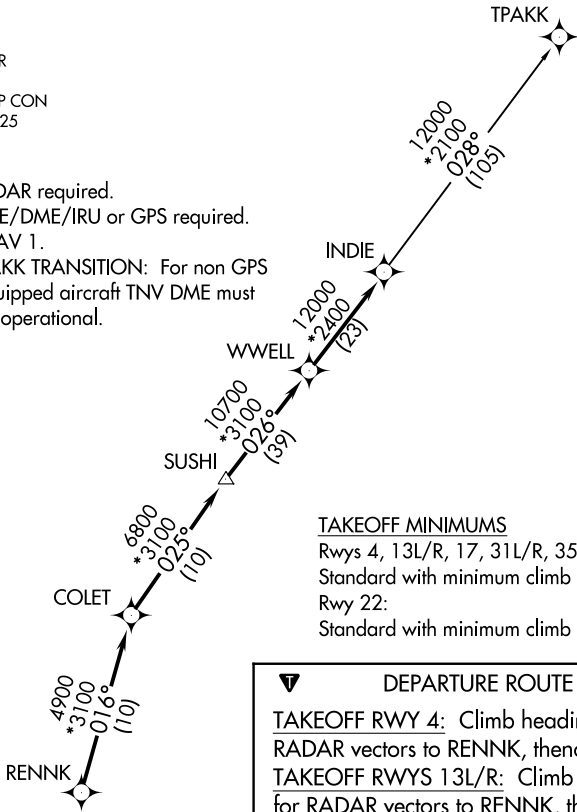


D-ATIS 124.6
CLNC DEL
125.45
CPDLC
GND CON
121.9
HOBBY TOWER
118.7 256.9
HOUSTON DEP CON
132.25 285.425

TOP ALTITUDE:
16000

- NOTE: RADAR required.
NOTE: DME/DME/IRU or GPS required.
NOTE: RNAV 1.
NOTE: TPAKK TRANSITION: For non GPS
equipped aircraft TNV DME must
be operational.



TAKEOFF MINIMUMS
Rwys 4, 13L/R, 17, 31L/R, 35:
Standard with minimum climb of 500' per NM to 560.
Rwy 22:
Standard with minimum climb of 500' per NM to 700.

▼ DEPARTURE ROUTE DESCRIPTION

TAKEOFF RWY 4: Climb heading 041° to 560 for
RADAR vectors to RENNK, thence

TAKEOFF RWYS 13L/R: Climb heading 131° to 560
for RADAR vectors to RENNK, thence

TAKEOFF RWY 17: Climb heading 176° to 560 for
RADAR vectors to RENNK, thence

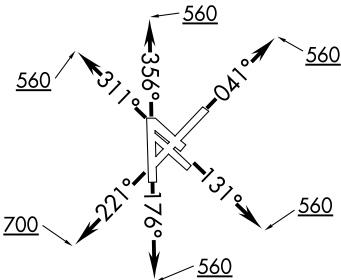
TAKEOFF RWY 22: Climb heading 221° to 700 for
RADAR vectors to RENNK, thence

TAKEOFF RWYS 31L/R: Climb heading 311° to 560
for RADAR vectors to RENNK, thence

TAKEOFF RWY 35: Climb heading 356° to 560 for
RADAR vectors to RENNK, thence

. . . . on track 016° to COLET, then on track 025° to
SUSHI, then on track 026° to WWELL, then on track
026° to INDIE, then on (transition). Maintain 16000
or as assigned by ATC. Expect filed altitude 10 minutes
after departure.

TPAKK TRANSITION (INDIE7.TPAKK)



NOTE: Chart not to scale.

SC-5, 31 DEC 2020 to 28 JAN 2021

SC-5, 31 DEC 2020 to 28 JAN 2021