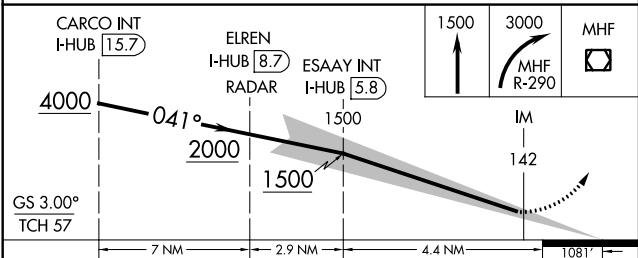
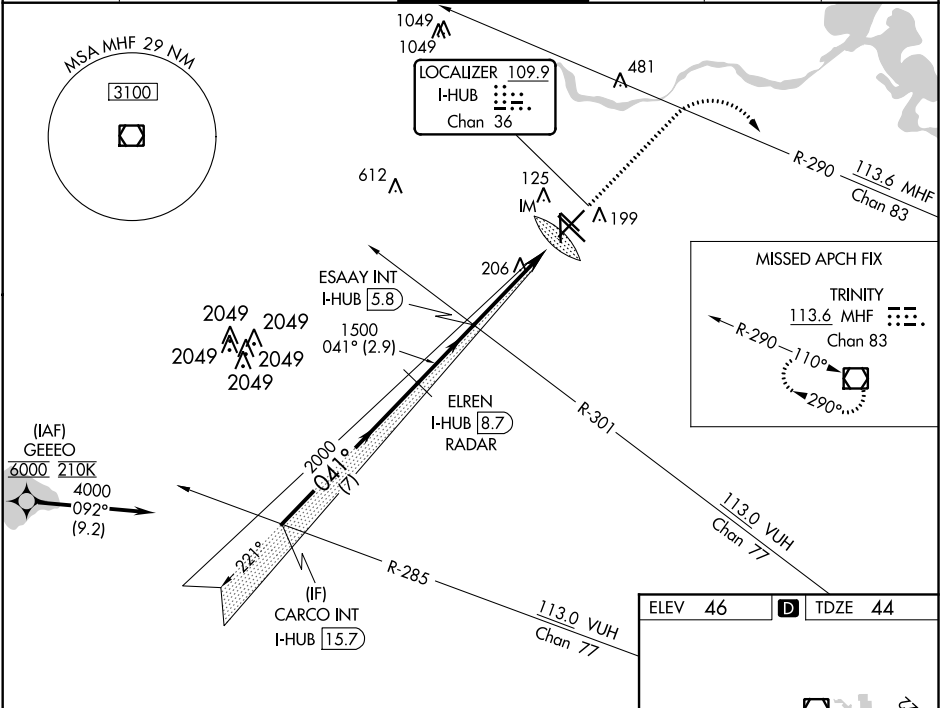


LOC/DME I-HUB <b>109.9</b> Chan <b>36</b>	APP CRS <b>041°</b>	Rwy Idg <b>7602</b> TDZE <b>44</b> Apt Elev <b>46</b>
---	------------------------	---

ILS RWY 4 (CAT II & III)  
WILLIAM P HOBBY (HOU)

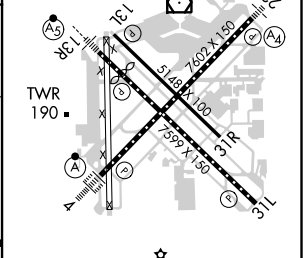
Aircraft not GPS equipped - RADAR required for procedure entry. From GEEEO: RNAV 1- GPS required.	ALSIF-2 	MISSED APPROACH: Climb to 1500 then climbing right turn to 3000 on MHF VOR/DME R-290 to MHF VOR/DME and hold.
CAT II: RVR 1000 authorized with specific OPSPEC, MSPEC, or LOA approval and use of autoland or HUD to touchdown.		

D-ATIS <b>124.6</b>	HOUSTON APP CON <b>120.05 379.1 EAST</b> <b>124.35 316.15 WEST</b>	HOBBY TOWER <b>118.7 256.9</b>	GND CON <b>121.9</b>	CLNC DEL <b>125.45</b>	CPDLC
------------------------	--	-----------------------------------	-------------------------	---------------------------	-------



CATEGORY	A	B	C	D
S-ILS 4	CAT II	RA 100/12	100 DA 144	
S-ILS 4		CAT III	RVR 06	

CATEGORY II & III ILS - SPECIAL AIRCREW  
& AIRCRAFT CERTIFICATION REQUIRED



REIL Rwy 31L and 35
MIRL Rwy 13L-31R and 17-35
HIRL Rwy 4-22 and 13R-31L
TDZ/CL Rwy 4, 13R and 31L

SC-5, 31 DEC 2020 to 28 JAN 2021

SC-5, 31 DEC 2020 to 28 JAN 2021