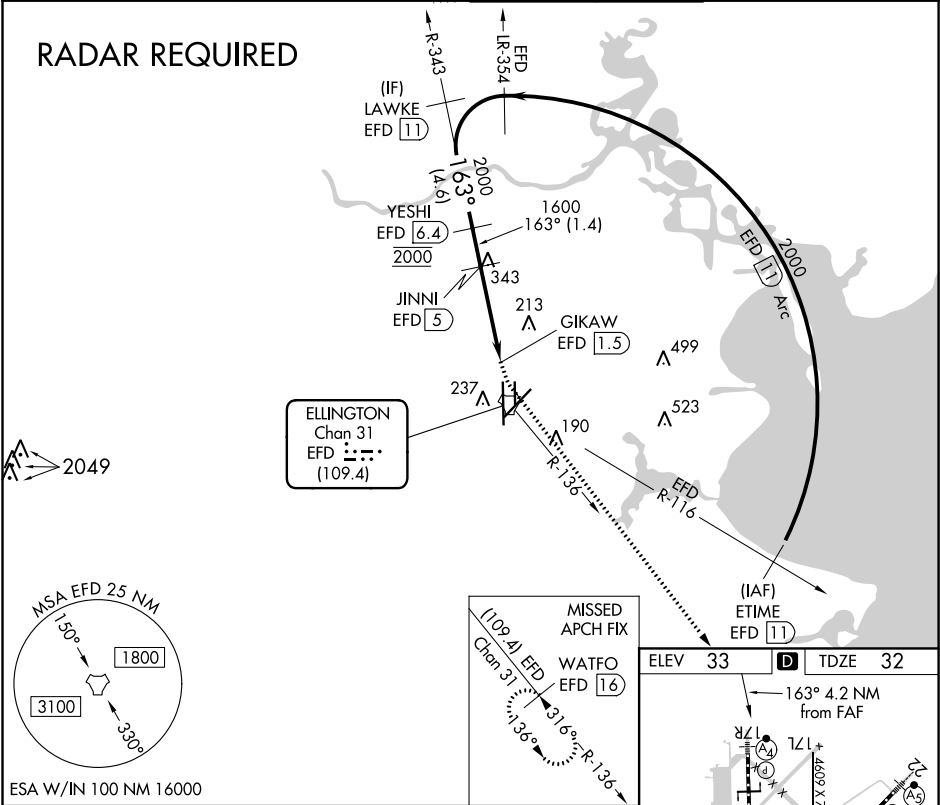


TACAN EFD Chan 31 (109.4)	APP CRS 163°	Rwy Idg TDZE 32 Apt Elev 33
---	------------------------	---

TACAN RWY 17R
ELLINGTON (EFD)

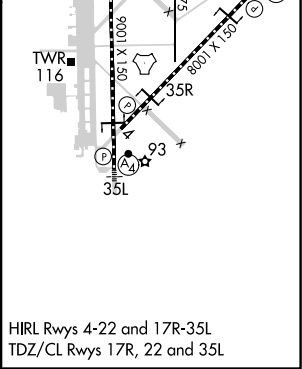
NA When ALS inop, increase visibility Cat A/B to RVR 5500 and Cat C/D/E visibility to 1½ miles. Circling NA west of Rwy 17R-35L.	MALSF 	MISSED APPROACH: Climbing left turn to 3100 on EFD TACAN R-136 to WATFO/EFD 16 DME and hold.
--	-----------	--

ATIS 135.575 269.9	HOUSTON APP CON 134.45 284.0	ELLINGTON TOWER 126.05 253.5	GND CON 121.6 275.8
------------------------------	--	--	-------------------------------



VGSI and descent angles not coincident (VGSI Angle 3.00/TCH 48).

ETIME EFD 11	LAWKE EFD 11	YESHI EFD 6.4	JINNI EFD 5	GIKAW EFD 1.5	WATFO EFD 16
2000	2000	2000	1600	1600	3100
163°		3.39°		3.39°	
4.6 NM		1.4		2.8 NM	
A		B		C	
S-17R		500/40 468 (500-¾)		500/60 468 (500-1¼)	
CIRCLING		500-1 467 (500-1)		580-1½ 547 (600-1½)	



SC-5, 31 DEC 2020 to 28 JAN 2021

SC-5, 31 DEC 2020 to 28 JAN 2021