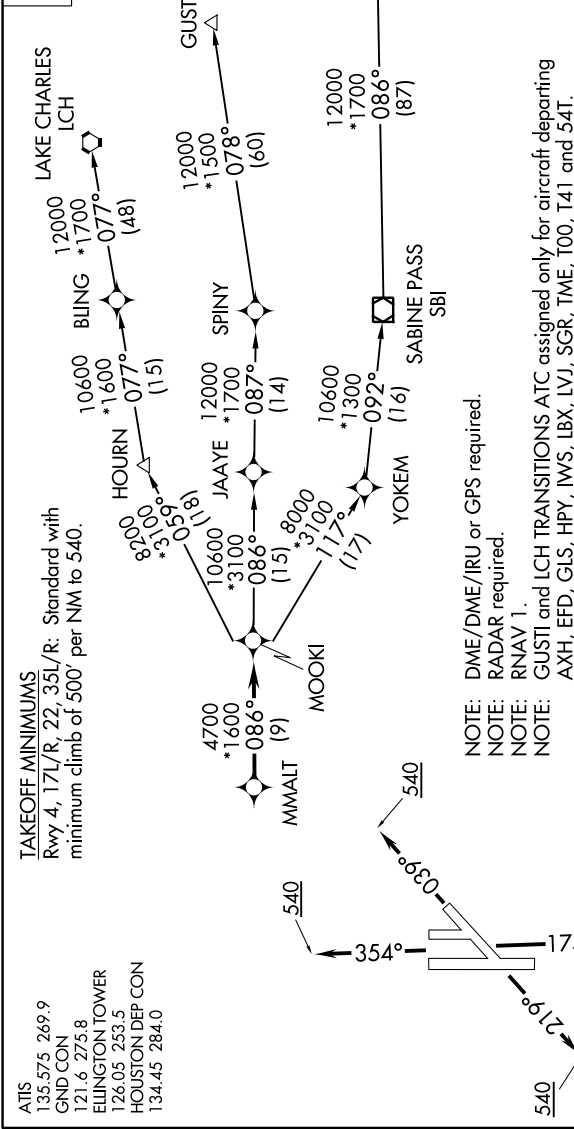


TOP ALTITUDE:  
ASSIGNED BY ATC



NOTE: Chart not to scale.

DEPARTURE ROUTE DESCRIPTION

TAKEOFF RWY 4: Climb on heading 039° to 540 for RADAR vectors to MMALT, thence. . . .  
TAKEOFF RWYS 17L/R: Climb on heading 174° to 540 for RADAR vectors to MMALT, thence. . . .  
TAKEOFF RWY 22: Climb on heading 219° to 540 for RADAR vectors to MMALT, thence. . . .  
TAKEOFF RWYS 35L/R: Climb on heading 354° to 540 for RADAR vectors to MMALT, thence. . . .

. . . on track 086° to MOOKI, then on (transition). Maintain ATC assigned altitude.  
Expect filed altitude 10 minutes after departure.

- GUSTI TRANSITION (MMALT5.GUSTI)
- LAKE CHARLES TRANSITION (MMALT5.LCH)
- WHITE LAKE TRANSITION (MMALT5.ILA)