

HI-TACAN RWY 35L

TACAN	EFD	APCH CRS	Rwy Idg	9001
Chan 31		002°	THRE	28
			Arpt Elev	33

JAL197 [USAF]

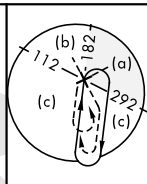
HOUSTON/ELLINGTON (KEFD)

<p>* When ALS inop, increase CAT CDE vis to 1 3/8 miles.</p> <p>** Circling not authorized W of Rwy 17R-35L.</p>	<p>MALSF</p> <p>A4</p>	<p>MISSED APPROACH: Climbing right turn to 3100 on EFD TACAN R-136 to WATFO/ EFD 16 DME and hold.</p>
--	------------------------	---

ATIS	HOUSTON APP CON	ELLINGTON TOWER	GND CON
135.575 269.9	134.45 284.0	126.05 253.5	121.6 275.8

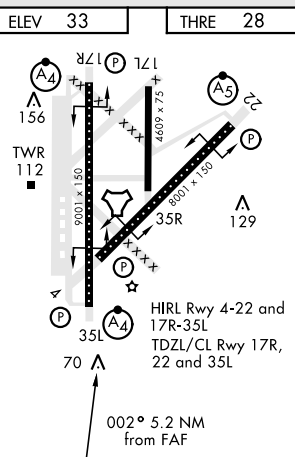
EFD TACAN	N29°36.36' W95°09.58'
CANDI	N29°39.24' W95°18.17'
APRIL	N29°04.53' W95°14.05'
WATFO	N29°23.90' W94°58.07'

Enroute penetration to
15 DME Arc available

RADAR
REQUIRED

EMERG SAFE ALT 100 NM 16,000

VANBE R-182		VGS1 and descent angles not coincident		3100	WATFO
15		LULLI 6		EFD R-136	EFD 16
3100		1700		TACAN	
002°		2.2		KEHRO 1.4	
4.6 NM		0.6		2.91°	
CATEGORY		C		D	
S-35L *		520/60		492 (500-1 1/4)	
CIRCLING **		520-1 1/2 487 (500-1 1/2)		600-2 567 (600-2)	
				660-2 1/4 627 (700-2 1/4)	



HI-TACAN RWY 35L