

ILS or LOC RWY 14
SCHOLES INTL AT GALVESTON (GLS)

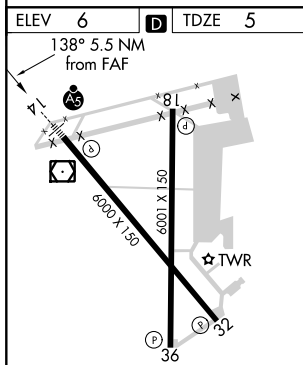
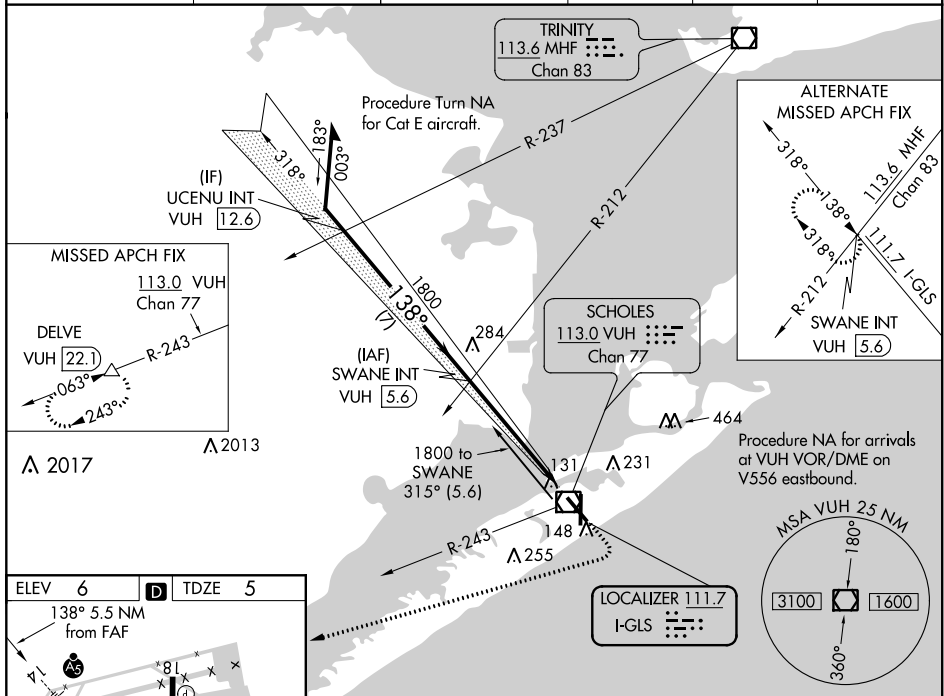
RADAR required for procedure entry at UCENU.

T Circling NA east of Rwy 18 and northeast of Rwy 32. DME from VUH
A NA VOR/DME. Simultaneous reception of I-GLS and VUH DME required.
For inop ALS, increase S-ILS 14 Cat E visibility to $\frac{3}{4}$ SM and S-LOC 14
Cat E visibility to $\frac{1}{2}$ SM.

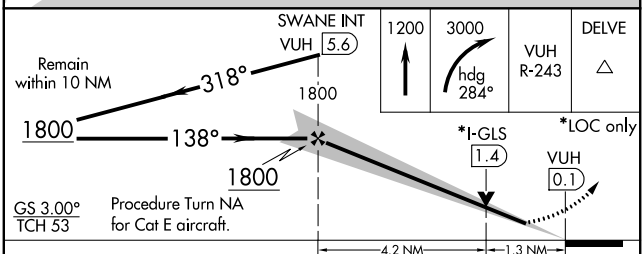


MISSED APPROACH: Climb to 1200 then climbing right turn to 3000 on heading 284° and VUH VOR/DME R-243 to DELVE/22.1 DME and hold.

ASOS 119.275	HOUSTON APP CON 134.45 284.0	GALVESTON TOWER ★ 120.575 (CTAF) 0	GND CON 118.625	CLNC DEL 135.35 (When twr closed)	UNICOM 123.05
------------------------	--	--	---------------------------	--	-------------------------



REIL Rwys 18, 32, and 36
MIRL Rwy 18-36
HIRL Rwy 14-32



CATEGORY	A	B	C	D	E
S-ILS 14	205-½ 200 (200-½)				
S-LOC 14	460-½	455 (500-½)	460-⅞ 455 (500-⅞)		
CIRCLING	500-1	494 (500-1)	500-1½ 494 (500-1½)	560-2 554 (600-2)	620-2¼ 614 (700-2¼)

SC-5, 31 DEC 2020 to 28 JAN 2021