

EL DORADO NINE DEPARTURE

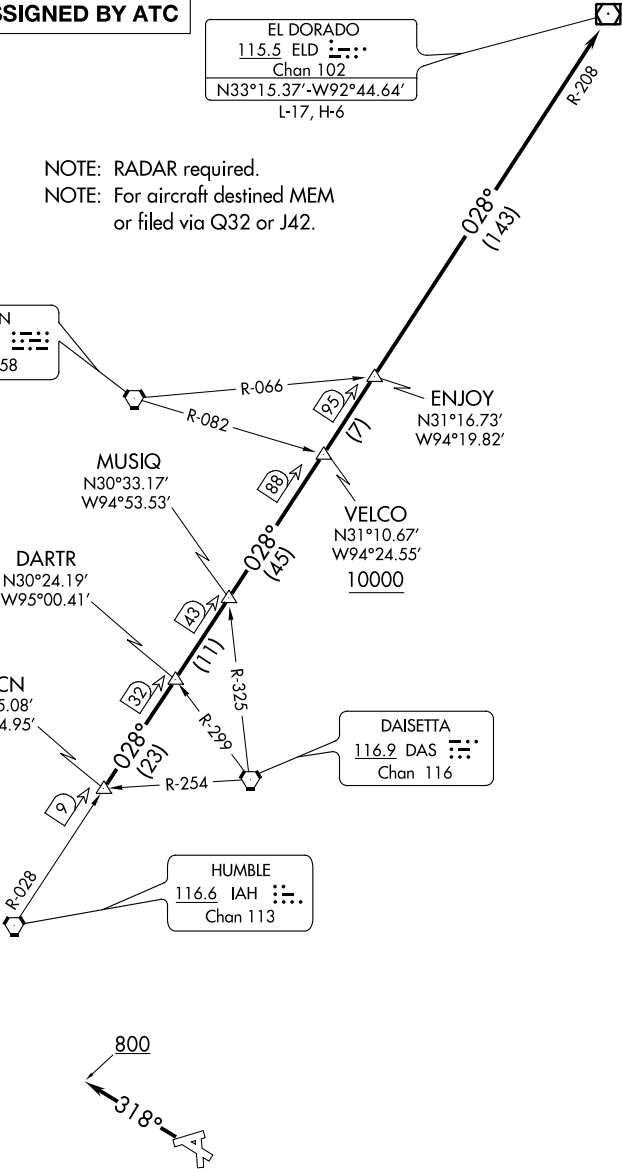
ASOS
119.275
CLNC DEL (When twr closed)
135.35
GND CON
118.625
GALVESTON TOWER ★
120.575
HOUSTON DEP CON
134.45 284.0
CTAF
120.575

TOP ALTITUDE:
ASSIGNED BY ATC

EL DORADO
115.5 ELD
Chan 102
N33°15.37'-W92°44.64'
L-17, H-6

NOTE: RADAR required.
NOTE: For aircraft destined MEM
or filed via Q32 or J42.

LUFKIN
112.1 LFK
Chan 58



TAKEOFF MINIMUMS
Rwys 14, 18, 32, 36: Standard.

NOTE: Chart not to scale. (NARRATIVE ON FOLLOWING PAGE)