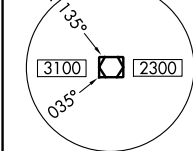
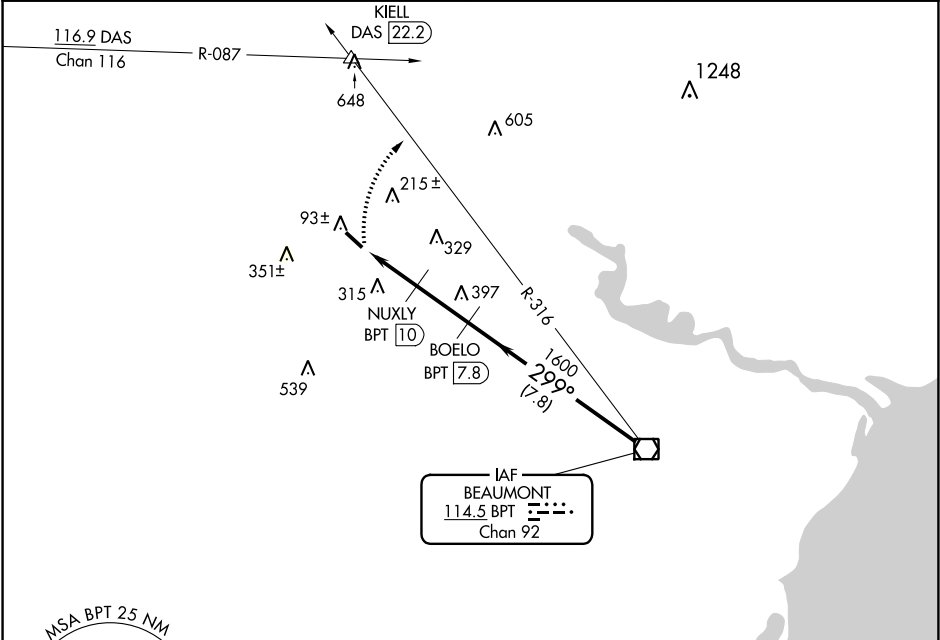


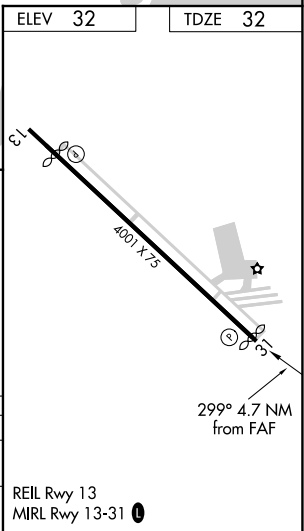
VOR/DME BPT	APP CRS	Rwy Idg	3934
114.5	299°	TDZE	32
Chan 92		Apt Elev	32

VOR/DME RWY 31
BEAUMONT MUNI (BMT)

<div><div>▼</div><div>NA</div></div> <div>Use Beaumont-Port Arthur, TX (Jack Brooks Rgnl) altimeter setting. Circling NA Rwy 16-34. Visibility reduction by helicopters NA.</div>	MISSED APPROACH: Climbing right turn to 2000 via BPT R-316 to KIELL INT/DAS 22.2 DME.		
AWOS-3P/T 118.425	HOUSTON APP CON 121.3 377.1	CLNC DEL 121.75	UNICOM 123.0 (CTAF) 0



2000	KIELL	NUXLY	BOELO	BPT
BPT R-316	△	BPT 10	BPT 7.8	VOR/DME
		3.04° TCH 40		Procedure Turn NA
		299°	1600	299°
		680		1600
		2.5 NM	2.2 NM	7.8 NM
CATEGORY	A	B	C	D
S-31	600-1	568 (600-1)	600-1½	600-1¾
			568 (600-1½)	568 (600-1¾)
CIRCLING	600-1	620-1	720-2	720-2¼
	568 (600-1)	588 (600-1)	688 (700-2)	688 (700-2¼)



SC-5, 31 DEC 2020 to 28 JAN 2021

SC-5, 31 DEC 2020 to 28 JAN 2021