


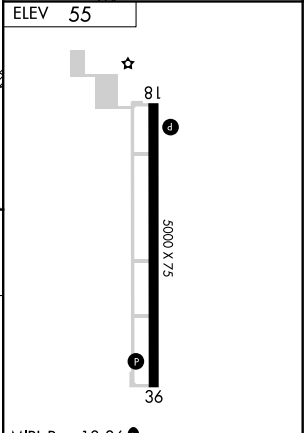
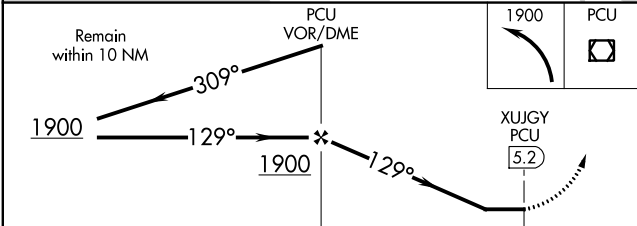
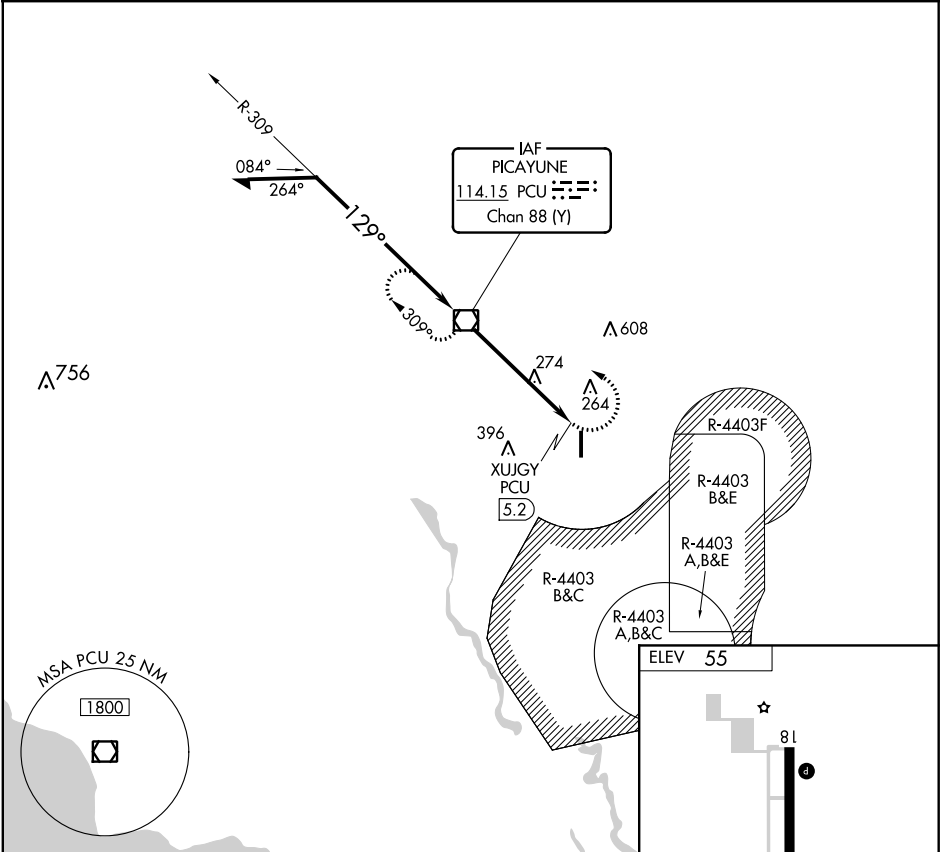
VOR/DME PCU <b>114.15</b> Chan <b>88</b> (Y)	APP CRS <b>129°</b>	Rwy Idg <b>5000</b> TDZE <b>N/A</b> Apt Elev <b>55</b>
--	------------------------	--


VOR-A  
PICAYUNE MUNI (MJD)

 When local altimeter setting not received, used Stennis Intl altimeter setting and increase all MDA 40 feet.

MISSED APPROACH: Climbing left turn to 1900 direct PCU VOR/DME and hold.

AWOS-3PT <b>119.075</b>	GULFPORT APP CON <b>124.6 354.1</b>	UNICOM <b>122.8</b> (CTAF) 
----------------------------	--	---



					5.2 NM		0.5		MIRL Rwy 18-36		
CATEGORY	A	B	C	D	FAF to MAP 5.2 NM						
 CIRCLING	540-1	580-1	NA			Knots	60	90	120	150	180
	485 (500-1)	525 (600-1)				Min:Sec	5:12	3:28	2:36	2:05	1:44

SC-4, 31 DEC 2020 to 28 JAN 2021

SC-4, 31 DEC 2020 to 28 JAN 2021