

WAAS CH 42909 W36A	APP CRS 359°	Rwy Idg 5000 TDZE 54 Apt Elev 55
----------------------------------------	------------------------	-------------------------------------------------------------

RNAV (GPS) RWY 36

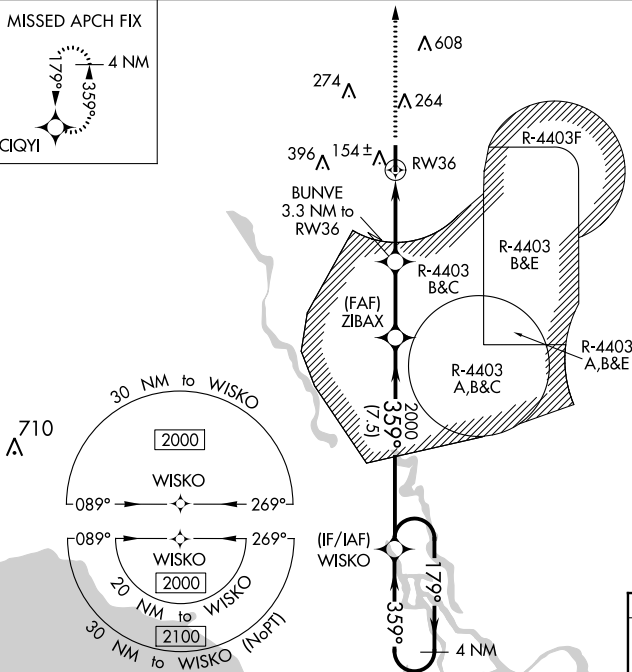
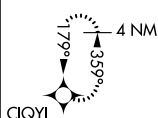
PICAYUNE MUNI (MJD)

T For uncompensated Baro-VNAV systems, LNAV/VNAV NA below -15°C (5°F) or above 54°C (130°F).
A Baro-VNAV and VDP NA when Stennis Inlt altimeter setting. DME/DVN RNP-0.3 NA. Helicopter visibility reduction below ¾ SM NA. Procedure NA when R-4403 A, B, C, or E is active. When local altimeter setting not received, use Stennis Inlt altimeter setting: increase LPV DA to 338 and all Cats visibility ½ mile; increase LNAV/VNAV DA to 374 and all Cats visibility ½ mile; increase all MDA 40 feet and LNAV Cats C and D visibility ½ mile, and Circling Cat C visibility ¼ mile.

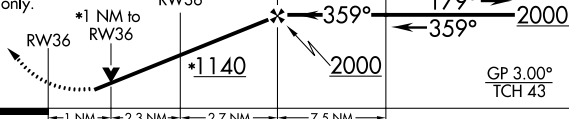
MISSED APPROACH:
Climb to 1800 direct
CIQY and hold.


AWOS-3PT 119.075	GULFPORT APP CON 124.6 354.1	UNICOM 122.8 (CTAF) 0
----------------------------	----------------------------------------	----------------------------------------

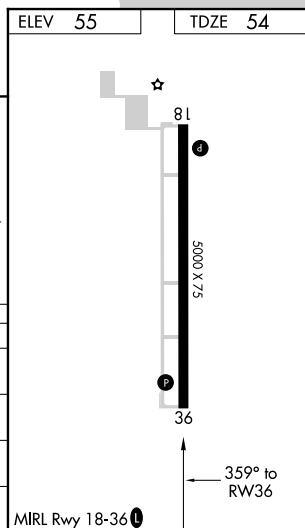
MISSED APCH FIX



* LNAV only.



CATEGORY	A	B	C	D
LPV DA	304-7 ₈ 250 (300-7 ₈)			
LNAV/ VNAV DA	340-1 286 (300-1)			
LNAV MDA	420-1 366 (400-1)			
 CIRCLING	480-1 425 (500-1)	580-1 525 (600-1)	700-1 ³ / ₄ 645 (700-1 ³ / ₄)	960-3 905 (1000-3)



RNAV (GPS) RWY 36