

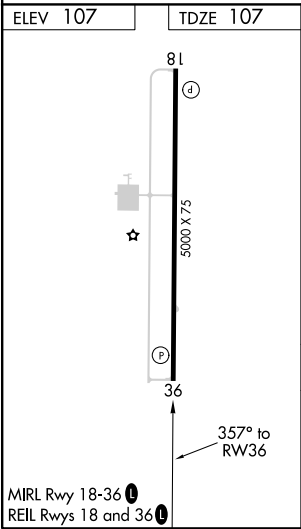
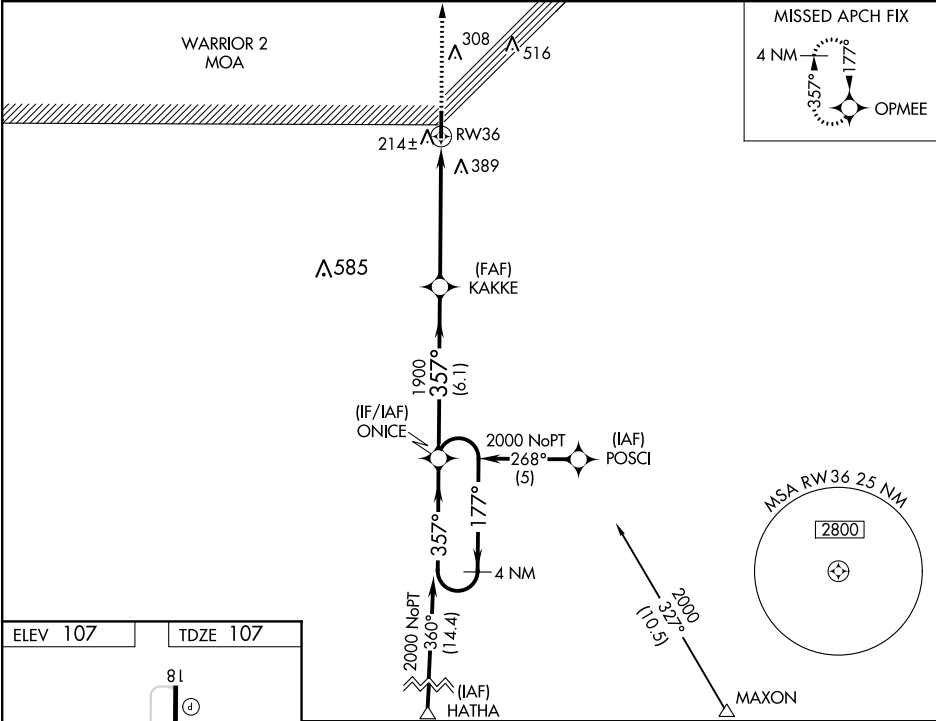
WAAS CH 49214 W36A	APP CRS 357°	Rwy Idg 5000 TDZE 107 Apt Elev 107
--	------------------------	---

RNAV (GPS) RWY 36
ALLEN PARISH (ACP)

⚠ Baro-VNAV NA when using Alexandria Intl altimeter setting. For uncompensated Baro-VNAV systems, LNAV/VNAV NA below -15°C (5°F) or above 54°C (130°F). DME/DME RNP-0.3 NA. VDP NA when using Alexandria Intl altimeter setting. When local altimeter setting not received, use Alexandria Intl altimeter setting and increase all DA 84 feet, all MDA 100 feet. Increase LPV all Cats, LNAV Cat C and Circling Cat C visibility ¼ mile, and LNAV/VNAV all Cats visibility ½ mile.

MISSED APPROACH:
Climb to 2200 direct OPMEE and hold.

AWOS-3PT 118.275	POLK APP CON 123.7 261.3	UNICOM 122.8 (CTAF) 0
----------------------------	------------------------------------	---------------------------------



2200 OPMEE		ONICE		4 NM Holding Pattern
*LNAV only		KAKKE	1900	357°
RW36		1.6	3.8 NM	6.1 NM
*1.6 NM to RW36		1900	357°	2000
GP 3.00°		TCH 51		
CATEGORY	A	B	C	D
LPV DA	413-1	306 (400-1)		NA
LNAV/VNAV DA	702-2	595 (600-2)		NA
LNAV MDA	660-1	553 (600-1)	660-1½ 553 (600-1½)	NA
CIRCLING	660-1 553 (600-1)	740-1 633 (700-1)	740-1½ 633 (700-1½)	NA

SC-4, 31 DEC 2020 to 28 JAN 2021

SC-4, 31 DEC 2020 to 28 JAN 2021