


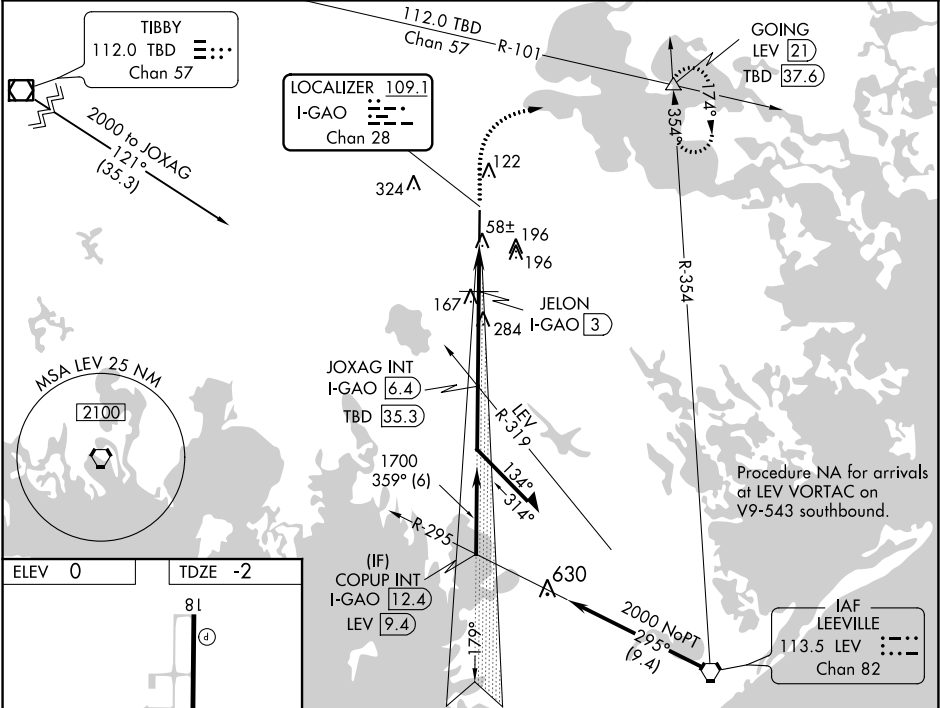


LOC/DME I-GAO	APP CRS	Rwy ldg	6500
109.1	359°	TDZE	-2
Chan 28		Apt Elev	0

ILS or LOC RWY 36
SOUTH LAFOURCHE LEONARD MILLER JR (GAO)

DME required.		<div>SSALR</div> <div></div>	MISSED APPROACH: Climb to 1200, then climbing right turn to 2000 on heading 050° and TBD VOR/DME R-101 to GOING INT/LEV 21 DME and hold.	
<div></div>				
AWOS-3PT 118.175	NEW ORLEANS APP CON 120.85 256.9	CLNC DEL 120.85	UNICOM 123.0 (CTAF) 	



ELEV 0	TDZE -2	1200	2000	TBD R-101	GOING	JOXAG INT I-GAO 6.4	Remain within 10 NM
81	001 X 0059	hdg 050°					
36	359° 5.2 NM from FAF	*LOC only.	*I-GAO 2.1	JELON I-GAO 3	1700	179°	2000
56 ±		I-GAO 1.2	620*	320 (400-1/2)	1700	359°	GS 3.00° TCH 51
		0.9 NM	0.9 NM	3.4 NM			
CATEGORY	A	B	C	D			
S-ILS 36		198-1/2	200 (200-1/2)				
S-LOC 36		320-1/2	322 (400-1/2)				
CIRCLING	440-1	560-1	640-1 3/4	640-2			
	440 (500-1)	560 (600-1)	640 (700-1 3/4)	640 (700-2)			