

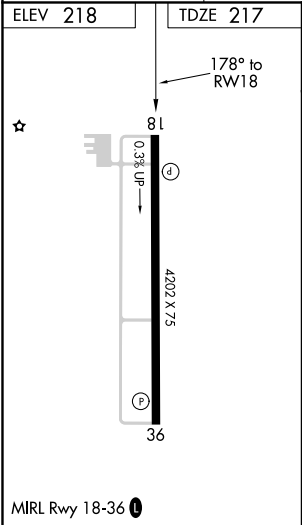
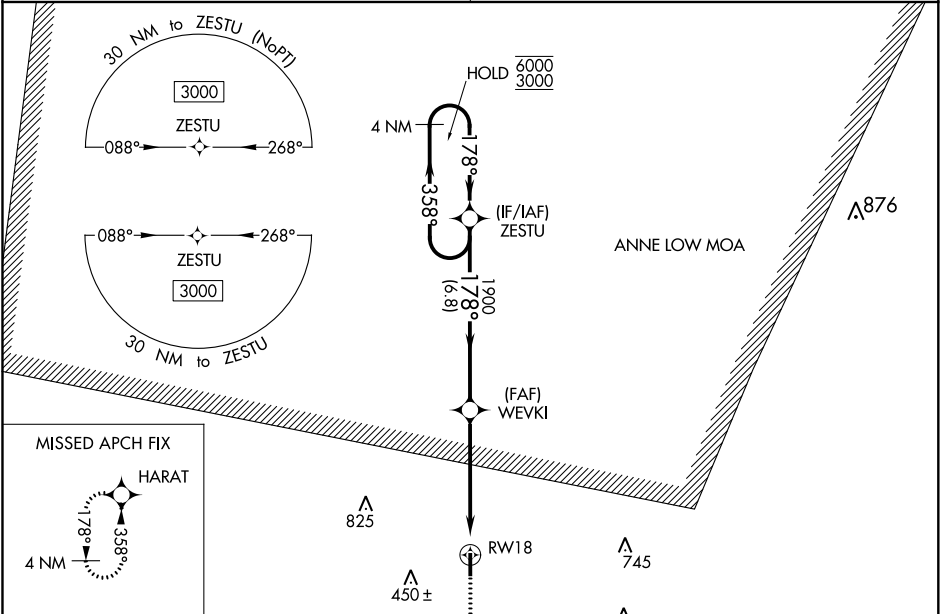
WAAS CH 86541 W18A	APP CRS 178°	Rwy Idg TDZE 217 Apt Elev 218
--	------------------------	---

RNAV (GPS) RWY 18

SPRINGHILL (SPH)

RNP APCH.	MISSED APPROACH: Climb to 3000 direct HARAT and hold.
<div><div>▼</div><div>▲ NA</div></div> <div>Rwy 18 helicopter visibility reduction below ¾ NA. For uncompensated Baro-VNAV systems, procedure NA below -15°C or above 54°C.</div>	

SHREVEPORT APP CON 123.75 360.725	UNICOM 122.8 (CTAF)
---	-------------------------------



<div>4 NM Holding Pattern ZESTU</div> <div>6000 ← 358° 3000 ← 178°</div> <div>GP 3.00° TCH 49</div>					<div>3000 HARAT</div> <div>↑</div> <div>✧</div>	
<div>178°</div> <div>1900</div> <div>6.8 NM</div> <div>3.8 NM</div> <div>1.4 NM</div> <div>RW18</div> <div>*1.4 NM to RW18</div> <div>*LNAV only.</div>						
CATEGORY	A	B	C	D		
LPV DA	498-7 ⁷ / ₈		281 (300-7 ⁷ / ₈)		NA	
LNAV/VNAV DA	496-7 ⁷ / ₈		279 (300-7 ⁷ / ₈)		NA	
LNAV MDA	700-1	483 (500-1)		700-1 ³ / ₈ 483 (500-1 ³ / ₈)	NA	
CIRCLING	700-1	482 (500-1)		820-1 ¹ / ₂ 602 (700-1 ¹ / ₂)	NA	