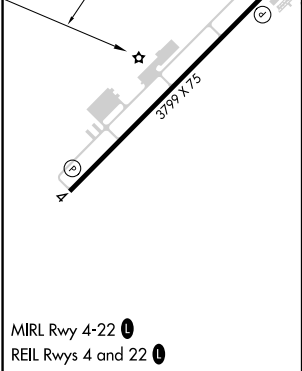
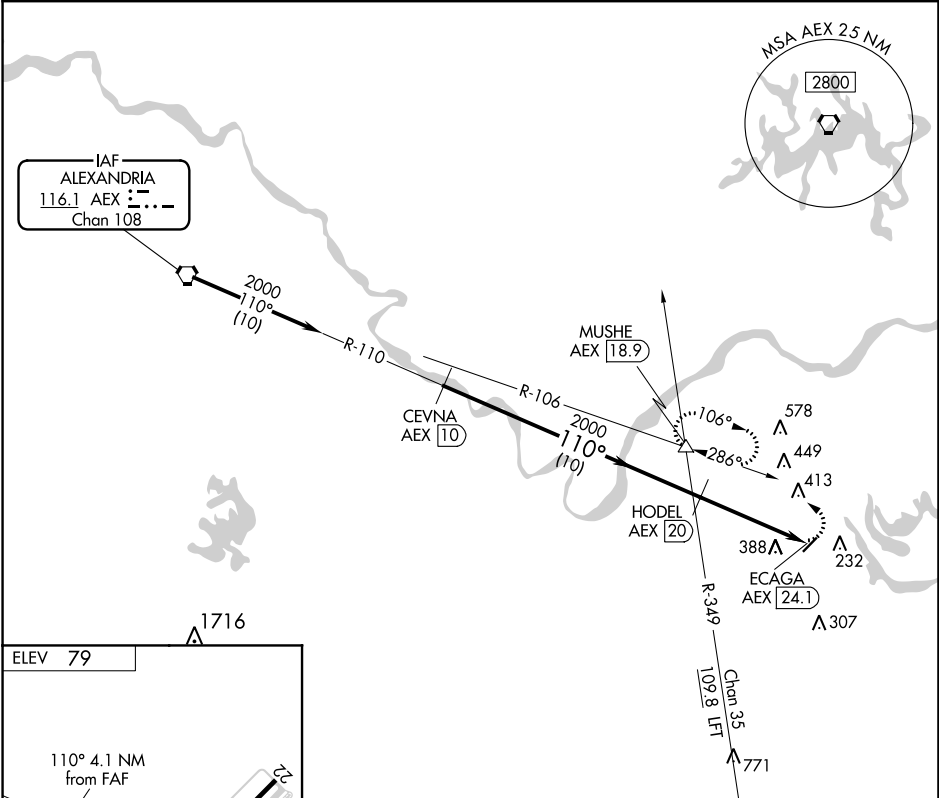


VORTAC AEX 116.1 Chan 108	APP CRS 110°	Rwy Idg TDZE Apt Elev N/A N/A 79
---	------------------------	--

VOR/DME-A
MARKSVILLE MUNI (MKV)

<p>V Use Esler Rgnl altimeter setting. When not received, use Alexandria Intl altimeter setting. When neither is received, procedure NA.</p> <p>Δ NA</p>	<p>MISSED APPROACH: Climbing left turn to 4000 via AEX R-106 to MUSHE INT/AEX 18.9 DME and hold.</p>
--	--

<p>POLK APP CON 125.4 302.2</p>	<p>CTAF 122.9 0</p>
--	--------------------------------



<p>Procedure Turn NA</p>			
<p>CEVNA AEX 10 HODEL AEX 20 ECAGA AEX 24.1</p>			
<p>2000 110° 2000 110° 4000 MUSHE AEX 18.9</p>			
<p>10 NM 4.1 NM</p>			
CATEGORY	A	B	C D
CIRCLING	760-1 681 (700-1)	760-1¼ 681 (700-1¼)	NA