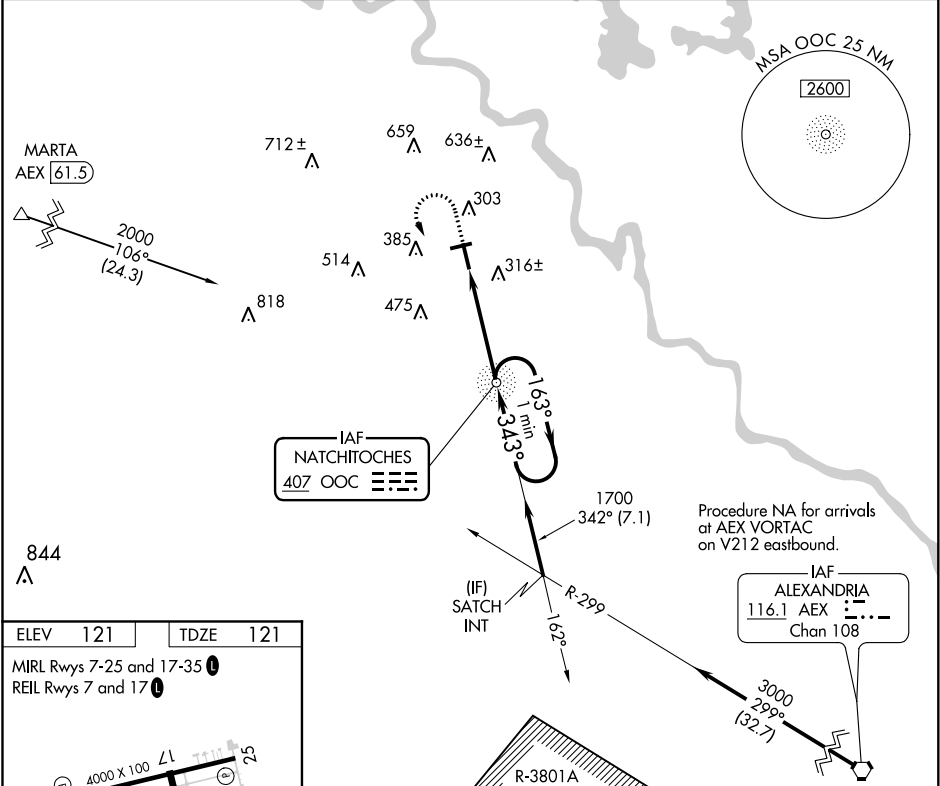


NDB OOC <b>407</b>	APP CRS <b>343°</b>	Rwy Idg TDZE <b>121</b> Apt Elev <b>121</b>	<b>5003</b>
-----------------------	------------------------	---	-------------




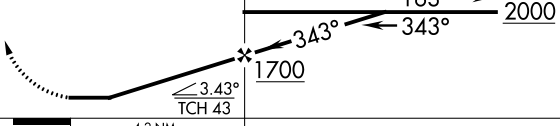
NDB RWY 35  
NATCHITOCHES RGNL (IER)

 NA	Helicopter visibility reduction below 3/4 SM NA. When local altimeter setting not received, use Alexandria Intl altimeter setting and increase all MDA 100 feet and S-35 Cat C visibility 1/8 mile, Circling Cat C visibility 1/4 mile. For inoperative ODALS increase S-35 Cat C visibility 1/8 mile. Inoperative table does not apply to S-35 Cat A/B.	ODALS 	MISSED APPROACH: Climb to 1000 then climbing left turn to 2000 direct OOC NDB and hold.
--------	--	-----------	---

AWOS-3 <b>119.025</b>	POLK APP CON <b>125.4 302.2</b>	GCO <b>135.075</b>	UNICOM <b>122.8(CTAF)</b>
--------------------------	------------------------------------	-----------------------	------------------------------



ELEV <b>121</b>	TDZE <b>121</b>
MIRL Rwy 7-25 and 17-35 REIL Rwy 7 and 17	
FAF to MAP 4.2 NM	
Knots	60 90 120 150 180
Min:Sec	4:12 2:48 2:06 1:41 1:24

1000	2000	OOO	VGS1 and descent angles not coincident (VGS1 Angle 3.00/TCH 43).	
				
			NDB	One Minute Holding Pattern
				
			4.2 NM	
CATEGORY	A	B	C	D
S-35	720-1 599 (600-1)		720-1 $\frac{5}{8}$ 599 (600-1 $\frac{5}{8}$ )	NA
CIRCLING	720-1 599 (600-1)	740-1 619 (700-1)	740-1 $\frac{3}{4}$ 619 (700-1 $\frac{3}{4}$ )	NA

SC-4, 31 DEC 2020 to 28 JAN 2021

SC-4, 31 DEC 2020 to 28 JAN 2021