

WAAS CH <b>72806</b> <b>W18A</b>	APP CRS <b>176°</b>	Rwy Idg TDZE Apt Elev	<b>6500</b> <b>414</b> <b>425</b>
--	------------------------	-----------------------------	---

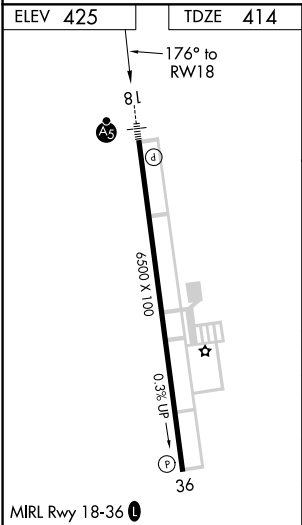
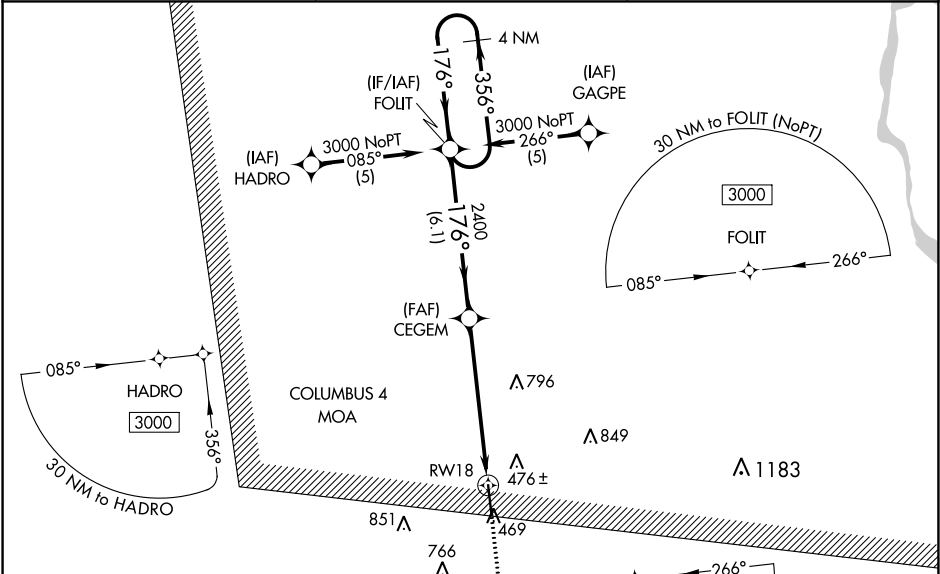
RNAV (GPS) RWY 18  
ROSCOE TURNER (CRX)

**⚠** Baro-VNAV NA when using Selmer altimeter setting. For uncompensated Baro-VNAV systems, LNAV/VNAV NA below -15°C (5°F) or above 48°C (118°F). DME/DME RNP-0.3 NA. VDP NA when using Selmer altimeter setting. When local altimeter setting not received, use Selmer altimeter setting and increase LPV DA to 682, LNAV/VNAV DA to 812, and all MDAs 80 feet; increase LNAV/VNAV all Cats, LNAV Cat C and D, and circling Cat C visibilities ¼ mile. For inoperative MALSR when using Selmer altimeter setting increase LPV visibilities to 1 mile all Cats.

**MALSR**

**MISSED APPROACH:**  
Climb to 3000 direct WEDGO and hold.

AWOS-3PT <b>118.675</b>	MEMPHIS CENTER <b>135.9 273.55</b>	UNICOM <b>122.8 (CTAF) 0</b>
----------------------------	---------------------------------------	---------------------------------



**MISSED APCH FIX**

WEDGO 176° 356° 4 NM

**4 NM Holding Pattern**

3000 356° 176° FOLIT

**\*LNAV only**

3000 WEDGO

**GP 3.00° TCH 46**

2400 CEGEM

**\*1.6 NM to RW18**

6.1 NM 4.4 NM 1.6 NM

RW18

CATEGORY	A	B	C	D
LPV DA	614-½ 200 (200-½)			
LNAV/VNAV DA	744-¾ 330 (400-¾)			
LNAV MDA	940-½	526 (600-½)	940-1 526 (600-1)	940-1¼ 526 (600-1¼)
<b>CIRCLING</b>	940-1	515 (600-1)	1080-1¾ 655 (700-1¾)	1160-2¼ 735 (800-2¼)

SC-4, 31 DEC 2020 to 28 JAN 2021

SC-4, 31 DEC 2020 to 28 JAN 2021