


LOC I-HSA	APP CRS	Rwy Idg	8497
110.35	182°	TDZE	23
		Apt Elev	23

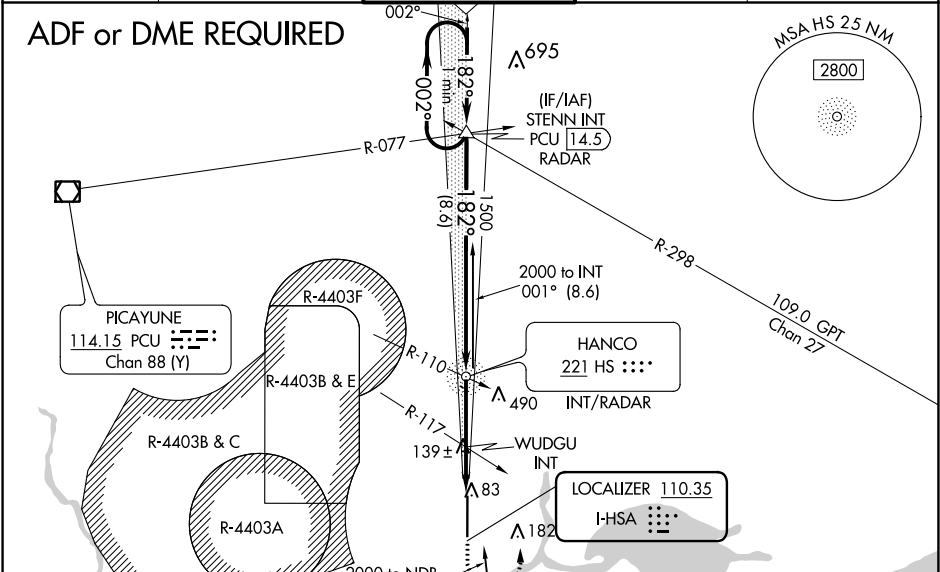
ILS Z or LOC Z RWY 18
STENNIS INTL (HSA)

A Circling NA for Cat E W of Rwy 18-36. ADF or DME required. When local altimeter setting not recieved, use Gulfport altimeter setting: increase DA to 270 feet; increase all MDA 60 feet and S-LOC 18 Cats C/D/E visibility 1/8 mile, Circling Cat C visibility 1/8 mile and Cats D/E visibility 1/4 mile. WUDGU FIX minimums: increase S-LOC 18 Cats C/D/E visibility 1/8 mile, and Circling Cats D/E 1/4 mile. For inop MALSRR, increase S-ILS 18 Cat E visibility to 3/4 mile, and S-LOC 18 Cats C/D/E visibility to 1 1/8 mile. WUDGU FIX minimums: increase S-LOC 18 Cats C/D/E visibility to 1 mile. For inop MALSRR when using Gulfport altimeter setting, increase S-ILS 18 Cat E visibility to 3/4 mile and S-LOC Cat E visibility to 1 1/8 mile. WUDGU FIX minimums: increase S-LOC 18 Cat E visibility to 1 1/4 mile.

MALSRR 

MISSED APPROACH: Climb to 700 then climbing left turn to 2000 on heading 010° and on PCU VOR/DME R-077 to STENN INT and hold.

AWOS-3PT	GULFPORT APP CON*	STENNIS TOWER*	GND CON	UNICOM
118.375	124.6 354.1	127.15 (CTAF) 0	121.725	122.95



					ELEV 23					D					TDZE 23														
VGSI and ILS glidepath not coincident (VGSI Angle 3.00/TCH 53).					2000 to NDB 355° (10.6)					519 CLERY INT GPT 20																			
STENN INT					HS NDB INT/RADAR					WUDGU INT					*LOC only.														
One Minute Holding Pattern					hdg 010°					PCU R-077					STENN INT														
2000					182°					1500					*580 when using Gulfport altimeter setting.														
GS 3.00° TCH 56					8.6 NM					2.5 NM					1.8 NM														
CATEGORY					A					B					C					D					E				
S-ILS 18					223-1/2					200 (200-1/2)																			
S-LOC 18					520-1/2					497 (500-1/2)					520-1					497 (500-1)									
CIRCLING					520-1					497 (500-1)					520-1 1/2					820-2 1/2					820-2 3/4				
															497 (500-1 1/2)					797 (800-2 1/2)					797 (800-2 3/4)				

SC-4, 31 DEC 2020 to 28 JAN 2021

SC-4, 31 DEC 2020 to 28 JAN 2021