

SLIDELL, LOUISIANA

AL-5806 (FAA)

19115

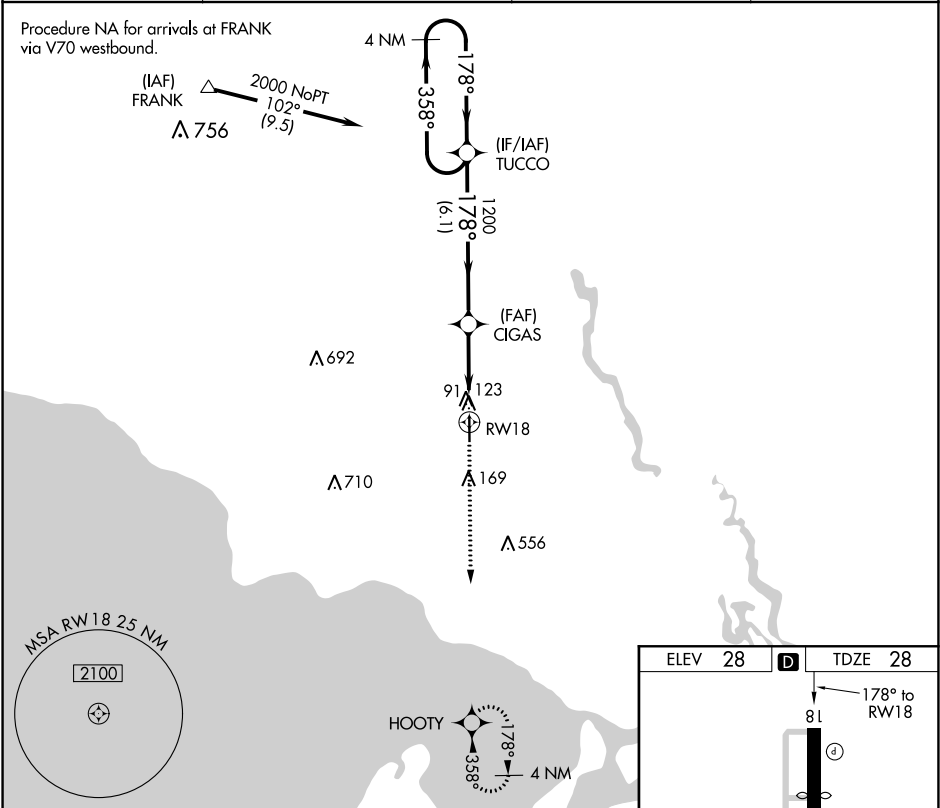
APP CRS	Rwy Idg	4058
178°	TDZE	28
	Apt Elev	28

RNAV (GPS) RWY 18

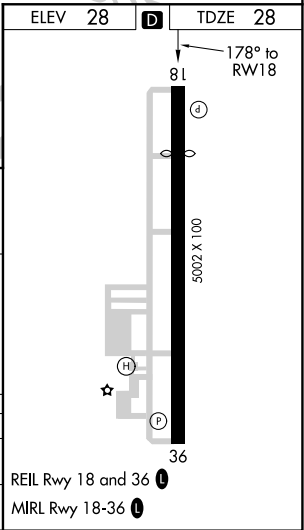
SLIDELL (ASD)

 NA	DME/DME RNP-0.3 NA. Helicopter visibility reduction below 1 SM NA.	MISSED APPROACH: Climb to 2000 direct HOOTY and hold.
--	---	---

ASOS 132.475	NEW ORLEANS APP CON 133.15 290.3	UNICOM 122.8 (CTAF) 	GCO 135.075
-----------------	-------------------------------------	--	----------------



4 NM Holding Pattern				
TUCCO				
CIGAS				
RW18				
2000				
358° 178°				
178°				
VGSI and descent angles not coincident (VGSI Angle 3.00/TCH 50).				
1200				
3.03° TCH 45				
6.1 NM 3.5 NM				
CATEGORY	A	B	C	D
RNAV MDA	400-1 372 (400-1)			NA
CIRCLING	480-1	452 (500-1)	480-1½ 452 (500-1½)	NA



SLIDELL, LOUISIANA
Orig-B 31MAR16

30°21' N-89°49' W

RNAV (GPS) RWY 18

SLIDELL (ASD)

SC-4, 31 DEC 2020 to 28 JAN 2021

SC-4, 31 DEC 2020 to 28 JAN 2021