

WAAS
CH **72824**
W16A

APP CRS
157°

Rwy Idg
TDZE
Apr Elev

5000
413
413

MC COMB/PIKE COUNTY/JOHN E LEWIS FIELD (MCB)

RNAV (GPS) RWY 16

RNP APCH.

▼

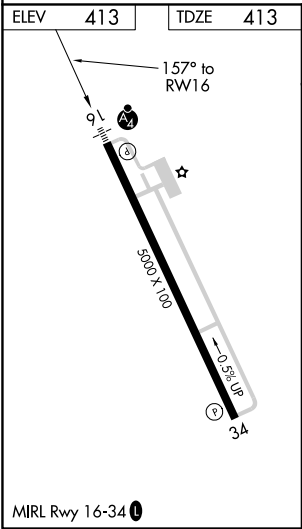
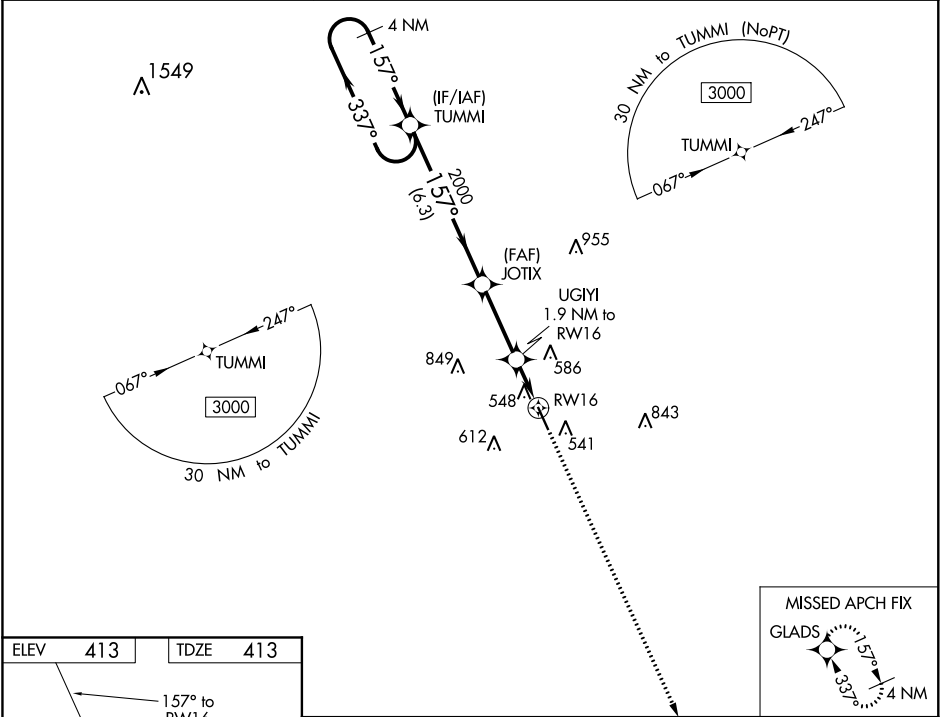
▲

For uncompensated Baro-VNAV systems, LNAV/VNAV NA below -4°C (25°F) or above 54°C (130°F). Inop table does not apply to LPV all Cats. For inop ALS, increase LNAV/VNAV all Cats visibility to 7/8 SM.

MALSF

MISSED APPROACH:
Climb to 3000 direct
GLADS and hold.

ASOS 119.025	HOUSTON CENTER 126.8 327.8	UNICOM 123.05 (CTAF) 0
------------------------	--------------------------------------	----------------------------------



<div>4 NM Holding Pattern</div> <div>TUMMI</div> <div>3000 ← 337°</div> <div>157° →</div> <div>GP 3.00°</div> <div>TCH 42</div>				
<div>4 NM</div> <div>JOTIX</div> <div>2000</div> <div>157°</div> <div>UGIYI</div> <div>1.9 NM to RW16</div> <div>*1.1 NM to RW16</div> <div>RW16</div> <div>6.3 NM</div> <div>3 NM</div> <div>0.8</div> <div>1.1</div>				
<div>3000</div> <div>GLADS</div> <div>*LNAV only.</div>				
CATEGORY	A	B	C	D
LPV DA	615-3/4 202 (300-3/4)			
LNAV/VNAV DA	709-3/4 296 (300-3/4)			
LNAV MDA	800-3/4	387 (400-3/4)	800-7/8	387 (400-7/8)
CIRCLING	880-1	467 (500-1)	940-1 1/2 527 (600-1 1/2)	1160-2 1/2 747 (800-2 1/2)