

LOC I-MCB 109.1	APP CRS 157°	Rwy Idg TDZE Apt Elev 5000 413 413
---------------------------	------------------------	--

ILS or LOC RWY 16

MC COMB/PIKE COUNTY/JOHN E LEWIS FIELD (MCB)

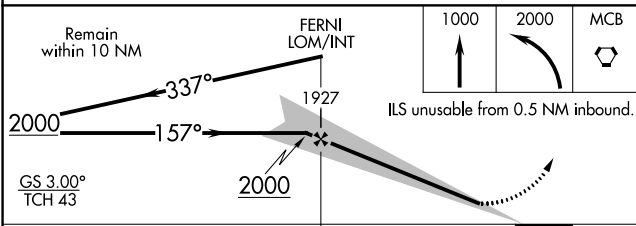
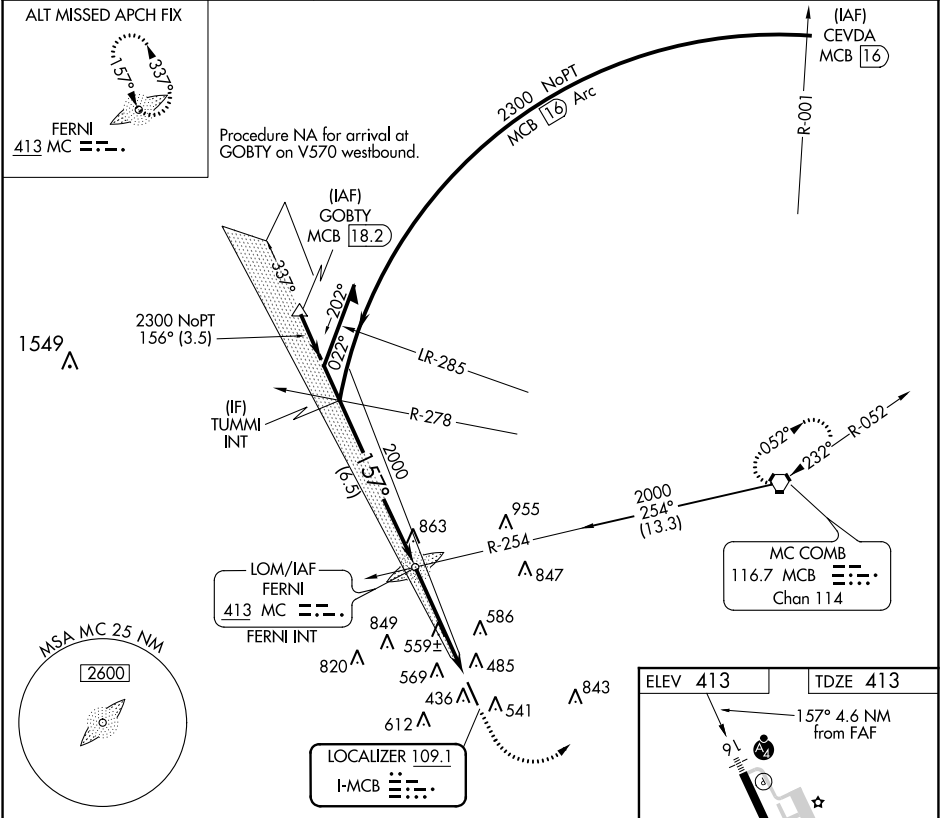
▼ Inop table does not apply to S-ILS 16 all Cats and S-LOC 16 Cats C and D.

▲

MALSF

MISSED APPROACH: Climb to 1000 then climbing left turn to 2000 direct MCB VORTAC and hold.

ASOS 119.025	HOUSTON CENTER 126.8 327.8	UNICOM 123.05 (CTAF) 0
------------------------	--------------------------------------	----------------------------------



CATEGORY	A	B	C	D
S-ILS 16	632-3/4		219 (300-3/4)	
S-LOC 16	820-3/4 407 (500-3/4)		820-1/4 407 (500-1/4)	
CIRCLING	880-1 467 (500-1)		940-1 527 (600-1 1/2)	

