

WAAS CH 53604 W36A	APP CRS 360°	Rwy Idg 5550 TDZE 326 Apt Elev 333
--	------------------------	---

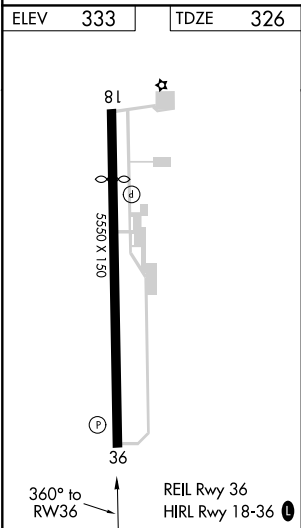
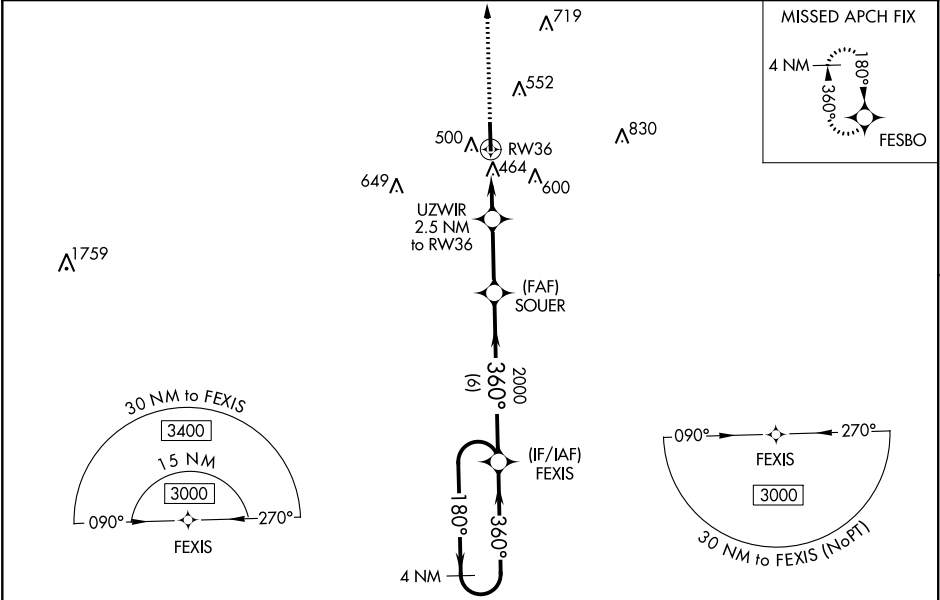
RNAV (GPS) RWY 36
GEORGE M BRYAN (STF)

NA

For uncompensated Baro-VNAV systems, LNAV/VNAV NA below -1.5°C (5°F) or above 54°C (130°F). DME/DME RNP-0.3 NA. When local altimeter setting not received, use Golden Triangle Rgnl altimeter setting and increase all DA/MDA 40 feet; increase LNAV/VNAV all Cats and LNAV Cats C/D visibility ½ mile. Increase Circling Cat C visibility ½ mile. Baro-VNAV and VDP NA when using Golden Triangle Rgnl altimeter setting.

MISSED APPROACH: Climb to 3400 direct FESBO and hold, continue climb-in-hold to 3400.

AWOS-3PT 118.975	COLUMBUS APP CON★ 135.6 323.275	CLNC DEL 126.25	UNICOM 122.7 (CTAF) 0
----------------------------	---	---------------------------	--



3400	FESBO	UZWIR 2.5 NM to RW36	SOUER	FEXIS	4 NM Holding Pattern
*LNAV only.		*1.1 NM to RW36	*1140	2000	180° → 3000
		1.1 NM	1.4 NM	2.7 NM	6 NM
CATEGORY	A	B	C	D	
LPV DA	526-¾	200 (200-¾)			
LNAV/VNAV DA	650-1½	324 (400-1½)			
LNAV MDA	720-1	394 (400-1)	720-1½	394 (400-1½)	
CIRCLING	920-1	587 (600-1)	920-1½	587 (600-1½)	1020-2¼
				687 (700-2¼)	

SC-4, 31 DEC 2020 to 28 JAN 2021

SC-4, 31 DEC 2020 to 28 JAN 2021