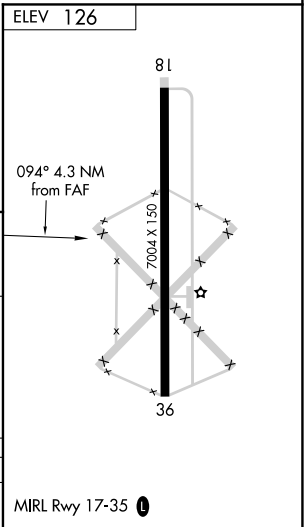
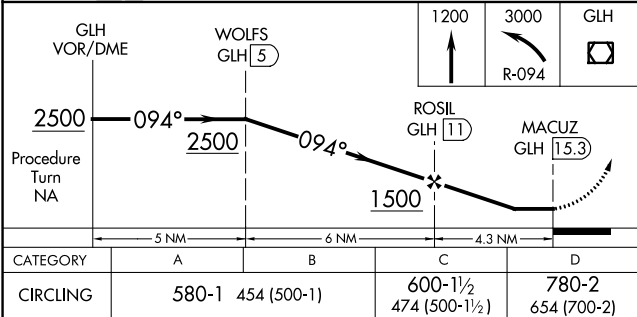
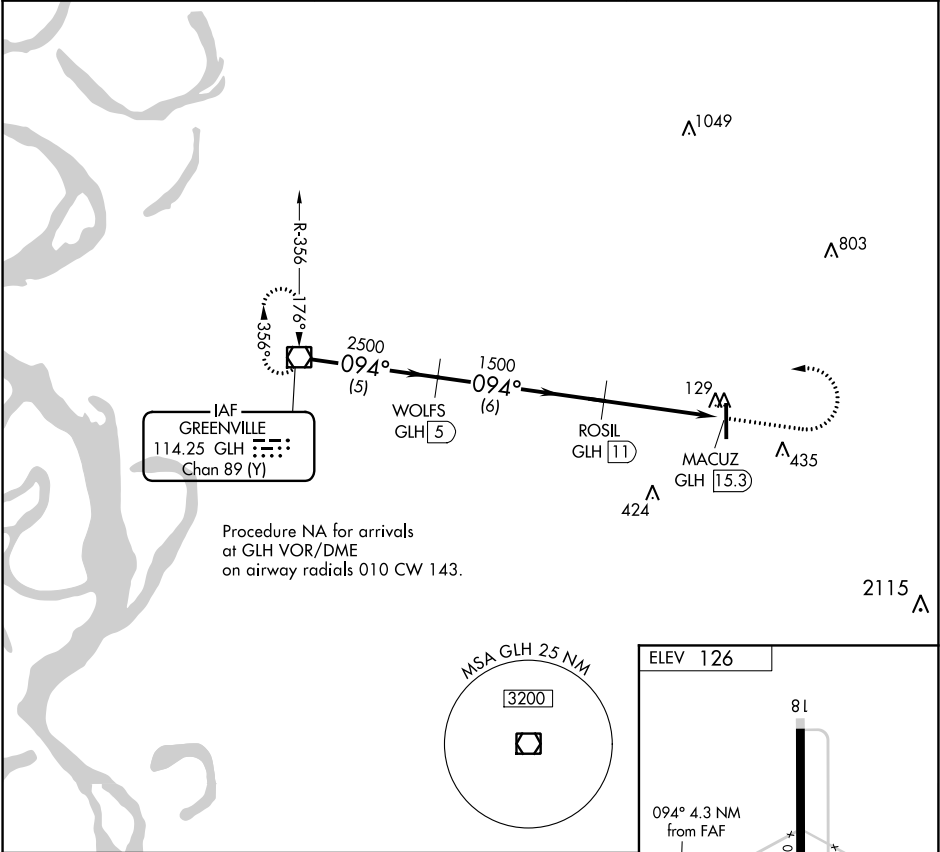


VOR/DME GLH 114.25 Chan 89 (Y)	APP CRS 094°	Rwy Idg TDZE Apt Elev N/A N/A 126
--	------------------------	---

VOR/DME-B
INDIANOLA MUNI (IDL)

⚠️ NA Use Greenville altimeter setting; when not received, use Greenwood altimeter setting and increase all MDA 40 feet and Circling Cat D visibility ¼ mile. Circling to Rwy 18 NA at night. Helicopter visibility reduction below 1 SM NA.	MISSED APPROACH: Climb to 1200 then climbing left turn to 3000 on R-094 to GLH VOR/DME and hold.
---	--

GLH ASOS 125.525	MEMPHIS CENTER 135.875 269.35	UNICOM 122.8 (CTAF) 0
----------------------------	---	--



SC-4, 31 DEC 2020 to 28 JAN 2021

SC-4, 31 DEC 2020 to 28 JAN 2021