

WAAS CH 58307 W16A	APP CRS 161°	Rwy ldg 4002 TDZE 168 Apt Elev 168
--	------------------------	---

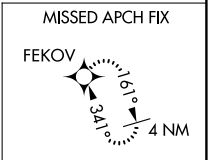
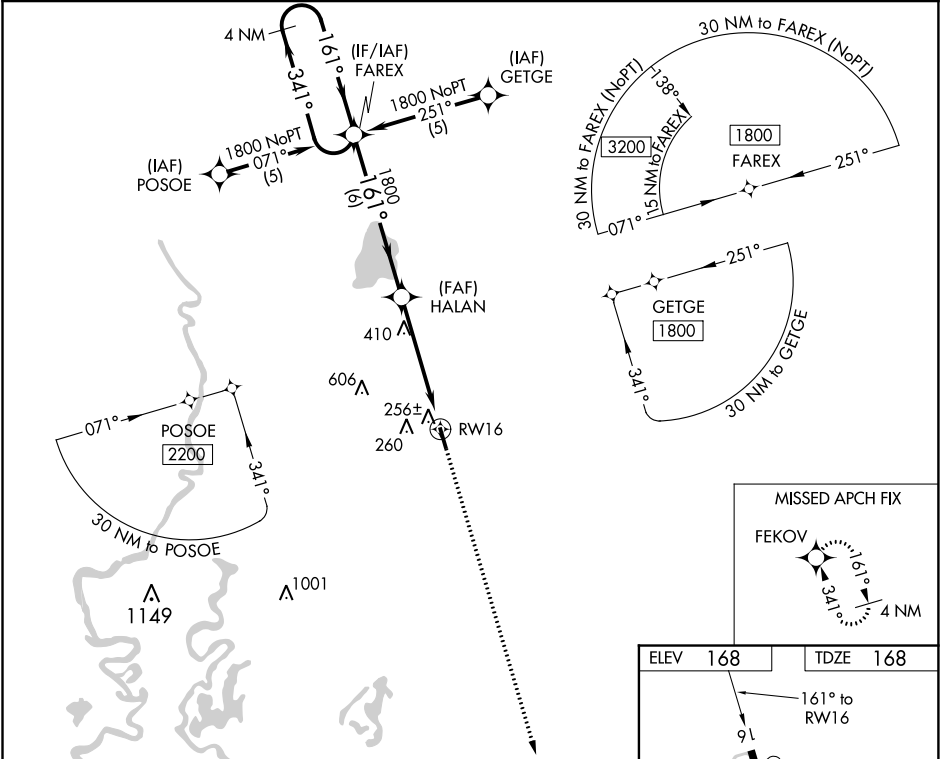
RNAV (GPS) RWY 16

MOREHOUSE MEMORIAL (BQP)

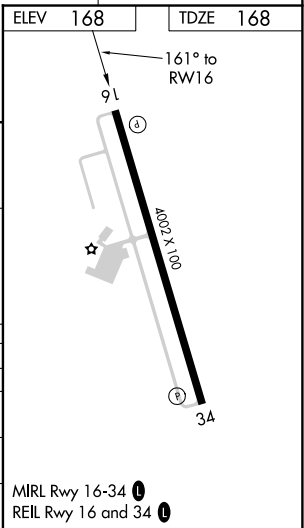
For uncompensated Baro-VNAV systems, LNAV/VNAV NA below -15°C (5°F) or above 54°C (130°F). DME/DME RNP-0.3 NA. Visibility reduction by helicopters NA. When local altimeter setting not received, use Monroe altimeter setting and increase all DA/MDA 60 feet and all visibilities ¼ mile. Baro-VNAV NA when using Monroe altimeter setting. VDP NA when using Monroe altimeter setting.

MISSED APPROACH:
Climb to 1800 direct
FEKOV and hold.

AWOS-3PT 118.375	MONROE APP CON ★ 126.9 307.9	UNICOM 122.8 (CTAF) 0
----------------------------	--	---------------------------------



4 NM Holding Pattern		FAREX	HALAN	1800	FEKOV
1800 ← 341°		161° →	161°	1800	↑
GP 3.00°					*LNAV only.
TCH 50					
		6 NM	3.3 NM	1.6 NM	
CATEGORY	A	B	C	D	
LPV DA	499-1¼	331 (400-1¼)		NA	
LNAV/VNAV DA	526-1¼	358 (400-1¼)		NA	
LNAV MDA	720-1	552 (600-1)	720-1½ 552 (600-1½)	NA	
CIRCLING	720-1	552 (600-1)	780-1¾ 612 (700-1¾)	NA	



SC-4, 31 DEC 2020 to 28 JAN 2021

SC-4, 31 DEC 2020 to 28 JAN 2021