

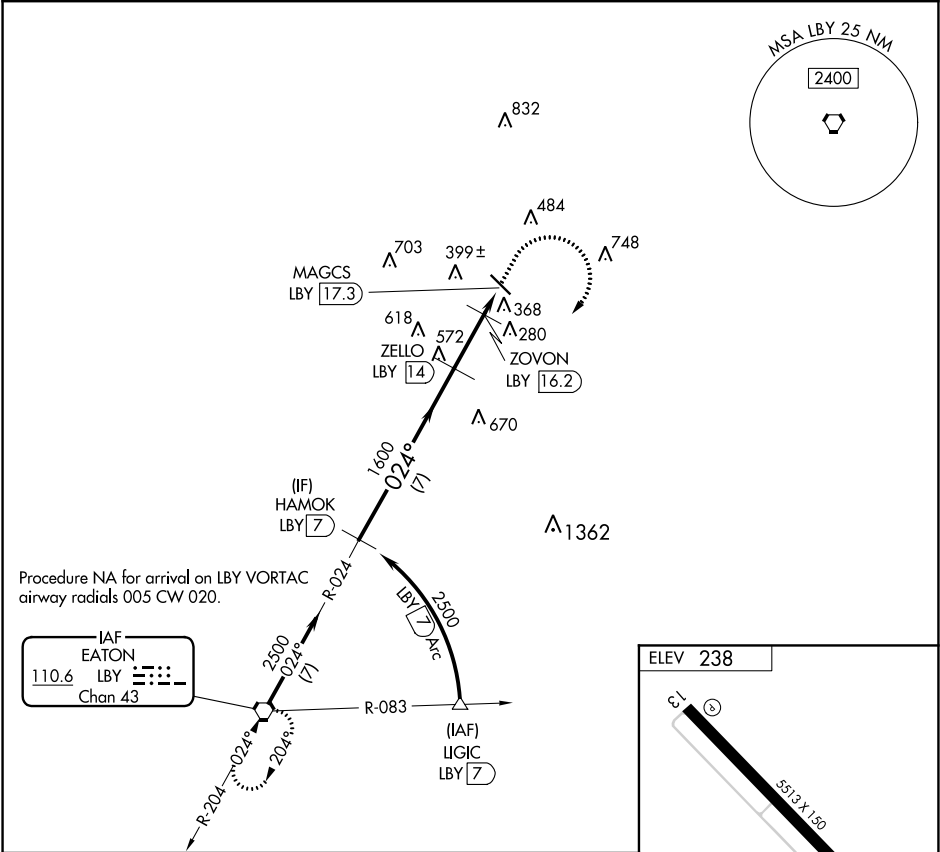
VORTAC LBV	APP CRS	Rwy Idg	N/A
110.6	024°	TDZE	N/A
Chan 43		Apt Elev	238

VOR-A

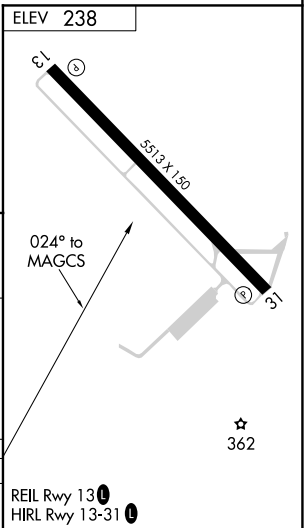
HESLER-NOBLE FIELD (LUL)

DME required.	MISSED APPROACH: Climb to 1000, then climbing right turn to 2500 direct LBV VORTAC and hold.
---------------	--

AWOS-3PT 119.275	HOUSTON CENTER 126.8 327.8	UNICOM 123.05 (CTAF) 0
---------------------	-------------------------------	---------------------------



	HAMOK LBV 7	ZELLO LBV 14	ZOVON LBV 16.2	MAGCS LBV 17.3
	2500	1600	940	
	024°			
	7 NM	2.2 NM	1.1 NM	
CATEGORY	A	B	C	D
CIRCLING	700-1 462 (500-1)	800-1 562 (600-1)	1040-2¼ 802 (900-2¼)	1060-2¾ 822 (900-2¾)



SC-4, 31 DEC 2020 to 28 JAN 2021

SC-4, 31 DEC 2020 to 28 JAN 2021