

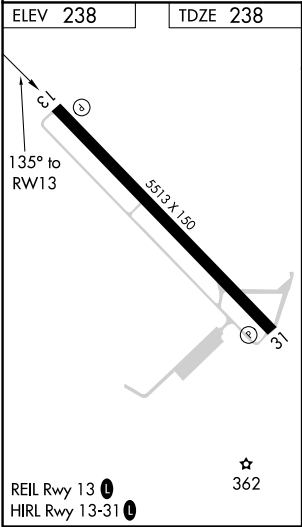
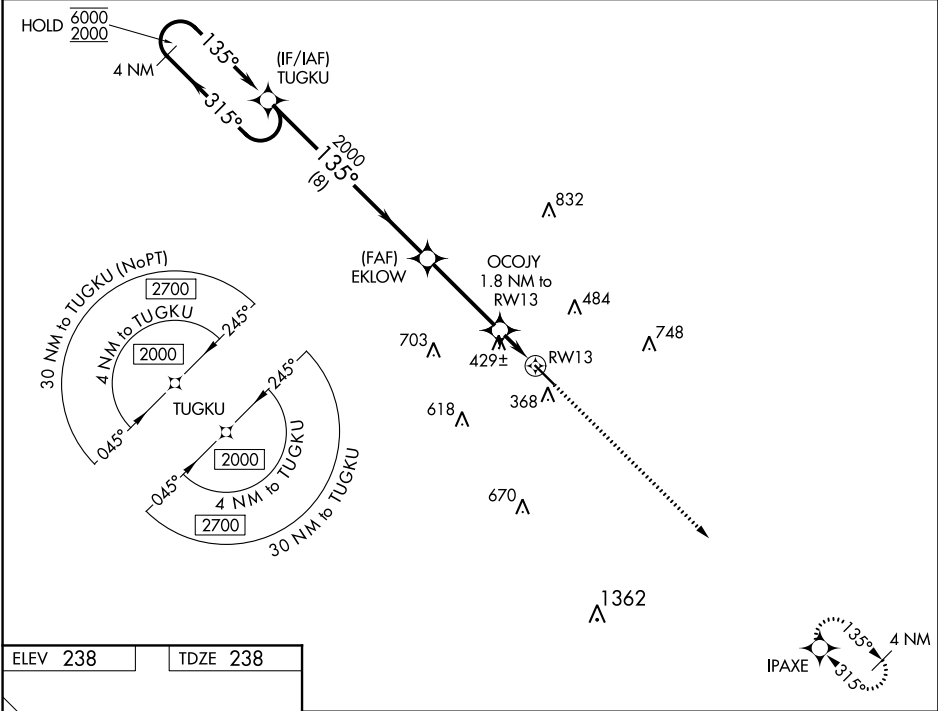
WAAS CH 45704 W13A	APP CRS 135°	Rwy Idg TDZE 238 Apt Elev 238
--	------------------------	---

RNAV (GPS) RWY 13

HESLER-NOBLE FIELD (LUL)

RNP APCH. ▼ For uncompensated Baro-VNAV systems, LNAV/VNAV NA ▲ below -15°C or above 54°C.	MISSED APPROACH: Climb to 2000 direct IPAXE and hold.
--	---

AWOS-3PT 119.275	HOUSTON CENTER 126.8 327.8	UNICOM 123.05 (CTAF) 0
----------------------------	--------------------------------------	----------------------------------



4 NM Holding Pattern		VGSI and RNAV glidepath not coincident (VGSI angle 3.00/TCH 40).		2000	IPAXE
TUGKU		EKLLOW		OCOJY 1.8 NM to RW13	*LNAV only.
6000 ← 315°		2000 → 135°		*840	
GP 3.00° TCH 40		8 NM		3.6 NM	0.5 NM
1.3 NM		RW13		RW13	
CATEGORY	A	B	C	D	
LPV DA	488-1		250 (300-1)		
LNAV/VNAV DA	759-1¾		521 (600-1¾)		
LNAV MDA	680-1	442 (500-1)	680-1¾ 442 (500-1¾)	680-2 442 (500-2)	
CIRCLING	700-1 462 (500-1)	800-1 562 (600-1)	1040-2¼ 802 (900-2¼)	1060-2¾ 822 (900-2¾)	

SC-4, 31 DEC 2020 to 28 JAN 2021

SC-4, 31 DEC 2020 to 28 JAN 2021