

MHZ VORTAC 113.2 Chan 79	APP CRS 175°	Rwy Idg 8500 TDZE 320 Apt Elev 346
----------------------------------------------	------------------------	---------------------------------------------------------------

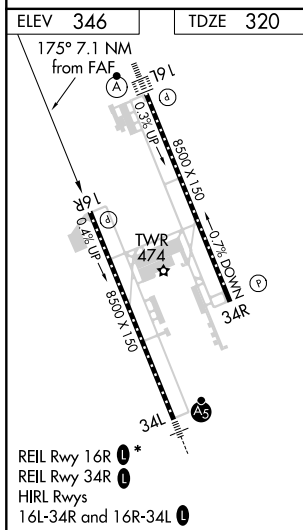
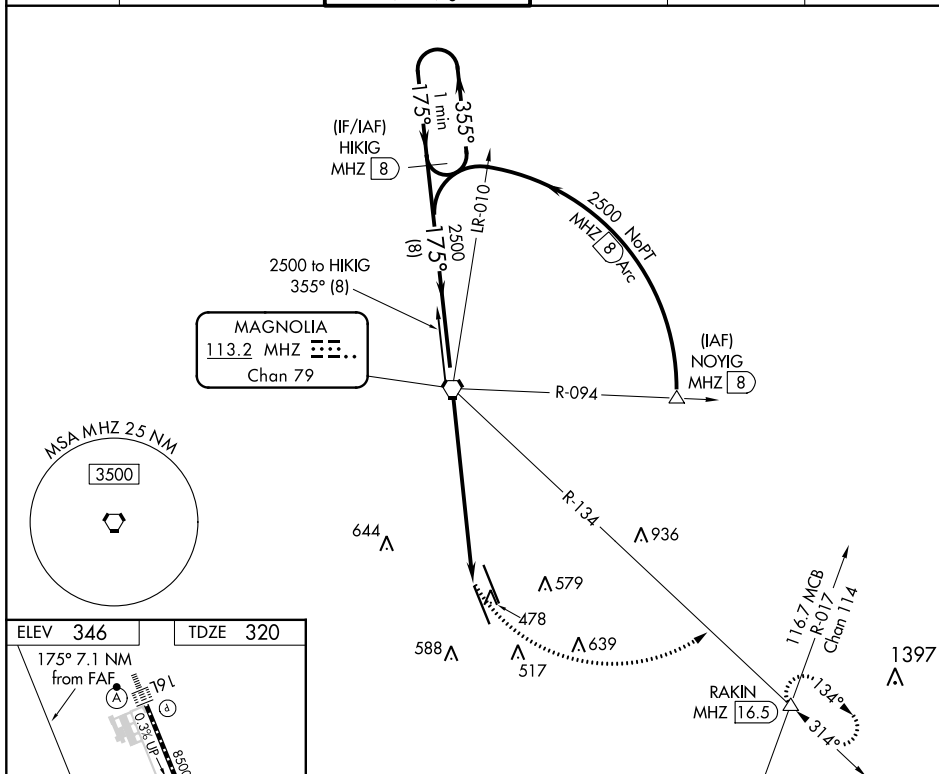
VOR/DME or TACAN RWY 16R

JACKSON-MEDGAR WILEY EVERS INTL (JAN)

V VDP NA with Hawkins Field altimeter setting. When local altimeter setting not received, use Hawkins Field altimeter setting and increase all MDA 20 feet; increase S-16R Cats C/D/E visibility $\frac{1}{8}$ mile. Circling NA for Cat E SW of Rwy 16R-34L. Helicopter visibility reduction below $\frac{3}{4}$ SM NA.

MISSED APPROACH: Climbing left turn to 3000 on heading 103° and MHZ VORTAC R-134 to RAKIN INT/ MHZ 16.5 DME and hold.

ATIS 121.05	JACKSON APP CON * 123.9 317.7	JACKSON TOWER * 120.9 (CTAF) 0 352.0	GND CON 121.7 348.6	120.7 0 *	UNICOM 122.95
-----------------------	-----------------------------------------	------------------------------------------------	-------------------------------	------------------	-------------------------



One Minute Holding Pattern		VGSI and descent angles not coincident (VGSI Angle 3.00/TCH 80).		3000	RAKIN
HIKIG MHZ 8		MHZ VORTAC		hdg 103°	MHZ R-134
2500 ← 355° 175° → 2500		2500		MHZ 5.6	MHZ 7.1
8 NM		5.5 NM		2.83° TCH 55	
CATEGORY	A	B	C	D	E
S-16R	880-1	560 (600-1)	880-1½	560 (600-1½)	
CIRCLING	880-1	534 (600-1)	900-1½ 554 (600-1½)	960-2 614 (700-2)	1040-2½ 694 (700-2½)